

# Economic differences of Hungarian Regions

- Katalin Czakó
- Veronika Poreisz



A projekt az Európai Unió támogatásával,  
az Európai Szociális Alap  
társfinanszírozásával valósul meg.

**Territorial differences of GDP**

**Dynamics of national economic sectors**

**Immigration – emigration**

**Employment - unemployment**

**High education**

**R&D**

**Summary**



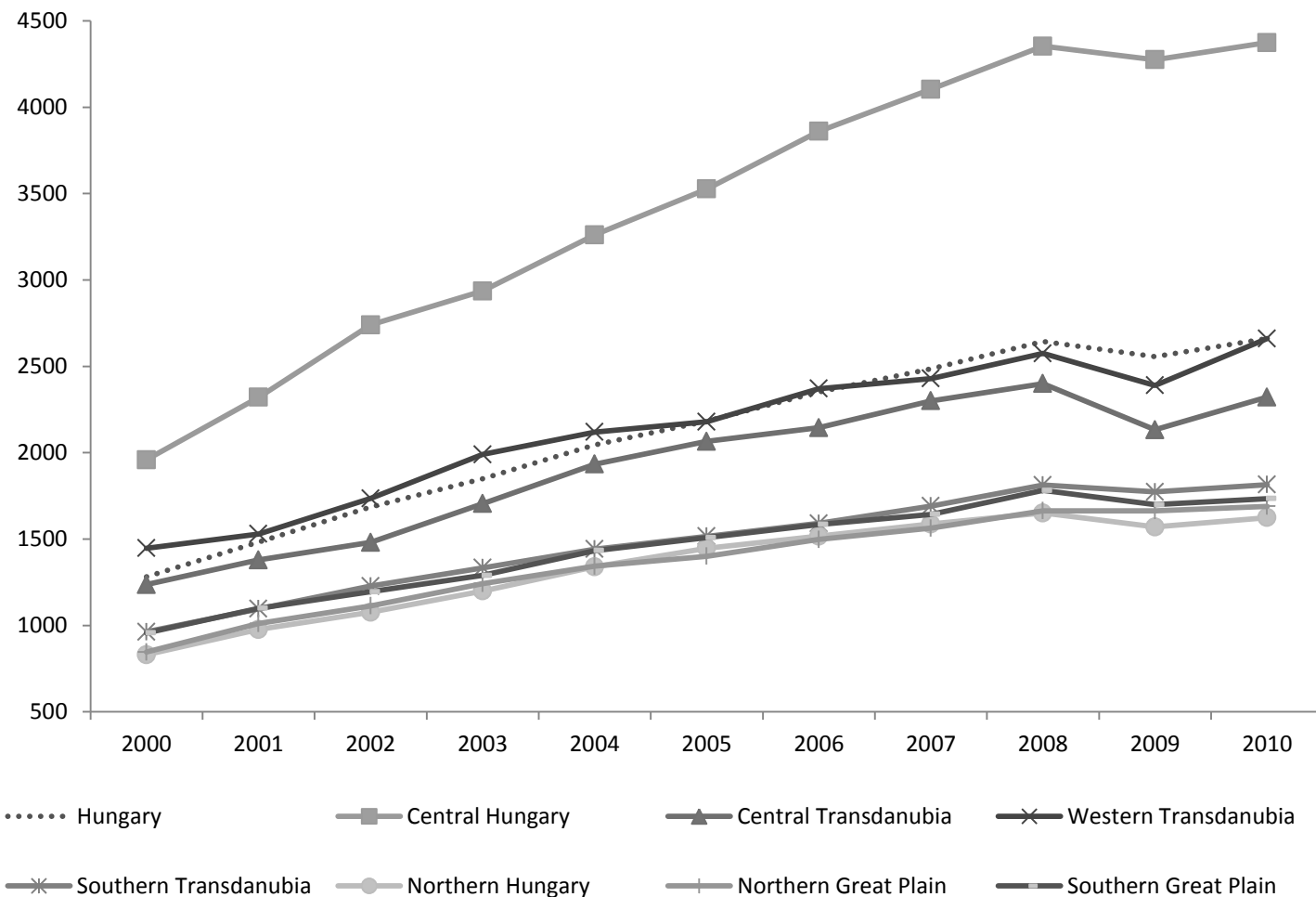
**MAGYARORSZÁG MEGÚJUL**



A projekt az Európai Unió támogatásával,  
az Európai Szociális Alap  
társfinanszírozásával valósul meg.

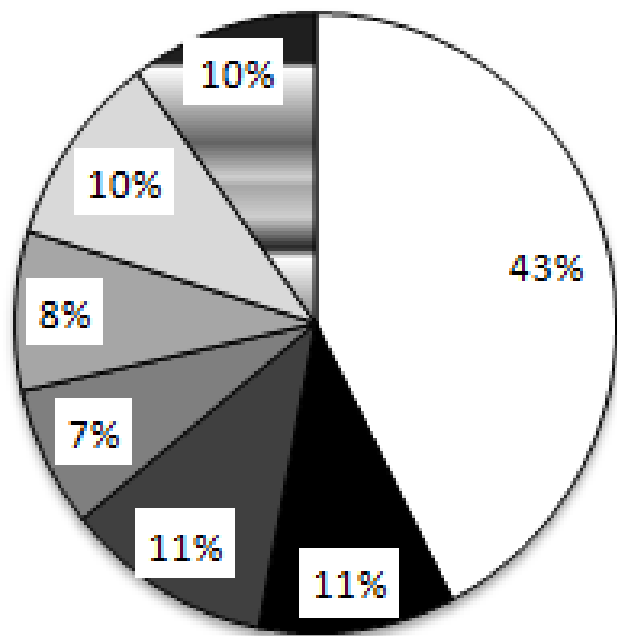
# Territorial differences of GDP

**Change of GDP per capita per regions (thousand Forint)**

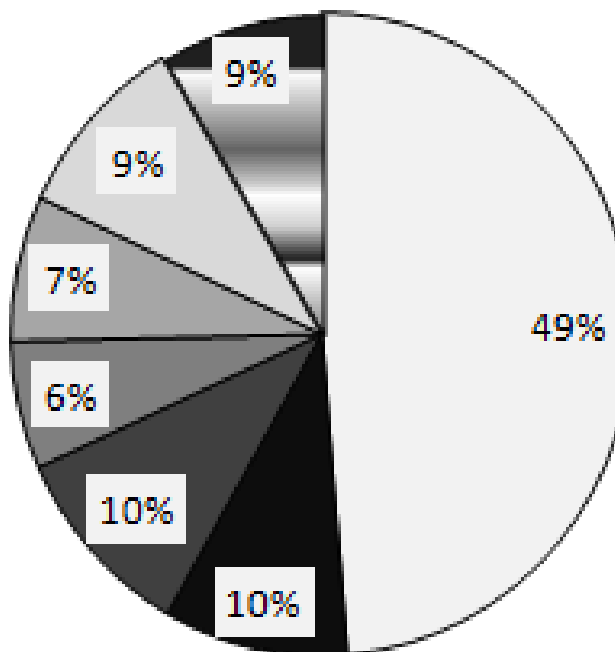


### Territorial distribution of GDP production in 2000 and 2010

2000



2010



□ Central Hungary

■ Southern Transdanubia

■ Southern Great Plain

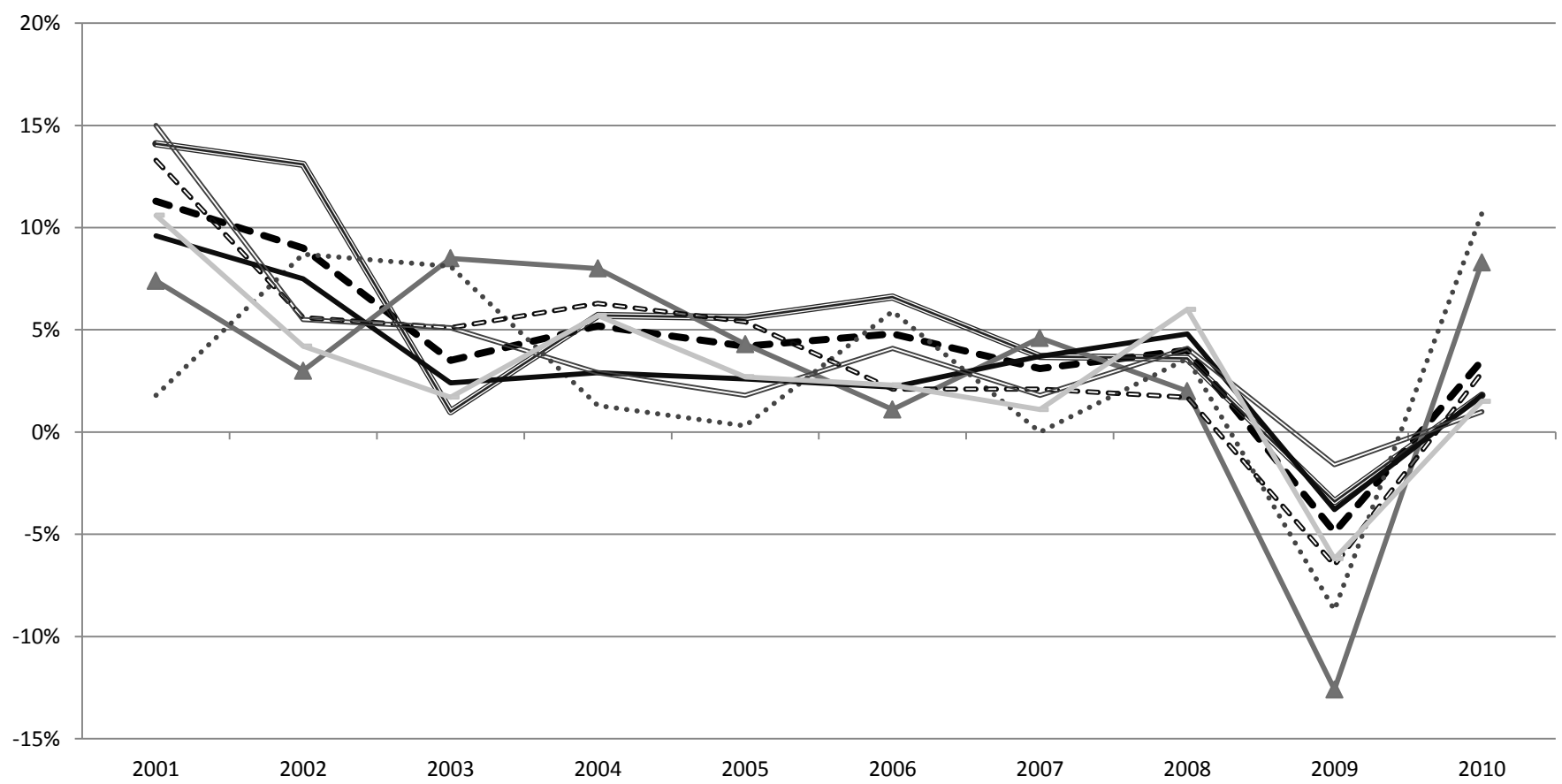
■ Central Transdanubia

■ Northern Hungary

■ Western Transdanubia

■ Northern Great Plain

**Growth rate of regional GDP between 2000 and 2010, in comparison with the previous year (based on purchasing power parity)**



- Hungary
- Southern Transdanubia
- Central Hungary
- Northern Hungary
- Central Transdanubia
- Northern Great Plain
- Western Transdanubia
- Southern Great Plain

Source: Based on data from Central Statistical Office

## Dynamics of national economic sectors

- **Based on the analysis, the categorization of different regions turned out to be the following:**
  - **Budapest:** Positive territorial and structural factor, higher than average dynamics
  - **Pest county:** Positive regional, negative sectoral factor, higher than average dynamics
  - **Central Transdanubia:** Negative regional and structural factor, less than average dynamics



# Dynamics of national economic sectors

- **Western Transdanubia**
  - Negative regional and structural factor, less than average dynamics. The sectoral factor's absolute value is only higher in this region than the regional factor.
- **Southern Transdanubia:**
  - Negative regional and structural factor, less than average dynamics
- **Northern Hungary:**
  - Negative regional and structural factor, less than average dynamics
- **Northern Great Plain**
  - Negative regional and structural factor, less than average dynamics
- **Southern Great Plain:**
  - Negative regional and structural factor,  
less than average dynamics



## Immigration – emigration

Domestic migration Margin				
	1990	1995	2000	2010
Central Hungary	14 593	2 522	- 269	22 408
Central Transdanubia	- 391	938	3 524	- 941
Western Transdanubia	- 122	1 349	1 432	1 261
Southern Transdanubia	- 903	- 69	- 305	- 3 291
Northern Hungary	- 5 931	- 3 117	- 1 402	- 8 304
Northern Great Plain	- 6 724	- 1 849	- 2 264	- 7 480
Southern Great Plain	- 522	226	- 716	- 3 653

Source: Based on data from  
Central Statistical Office

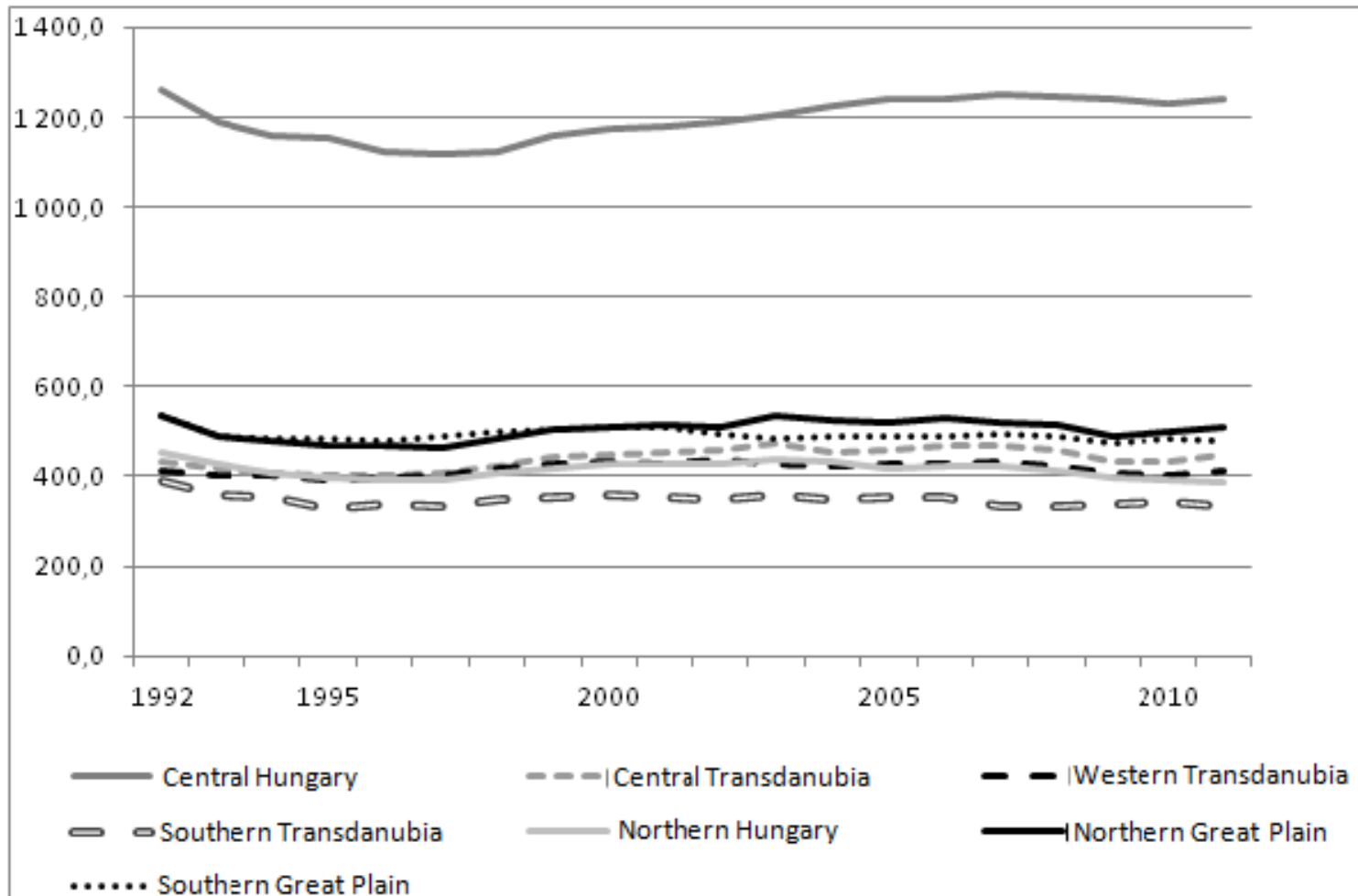


A projekt az Európai Unió támogatásával,  
az Európai Szociális Alap  
társfinanszírozásával valósul meg.

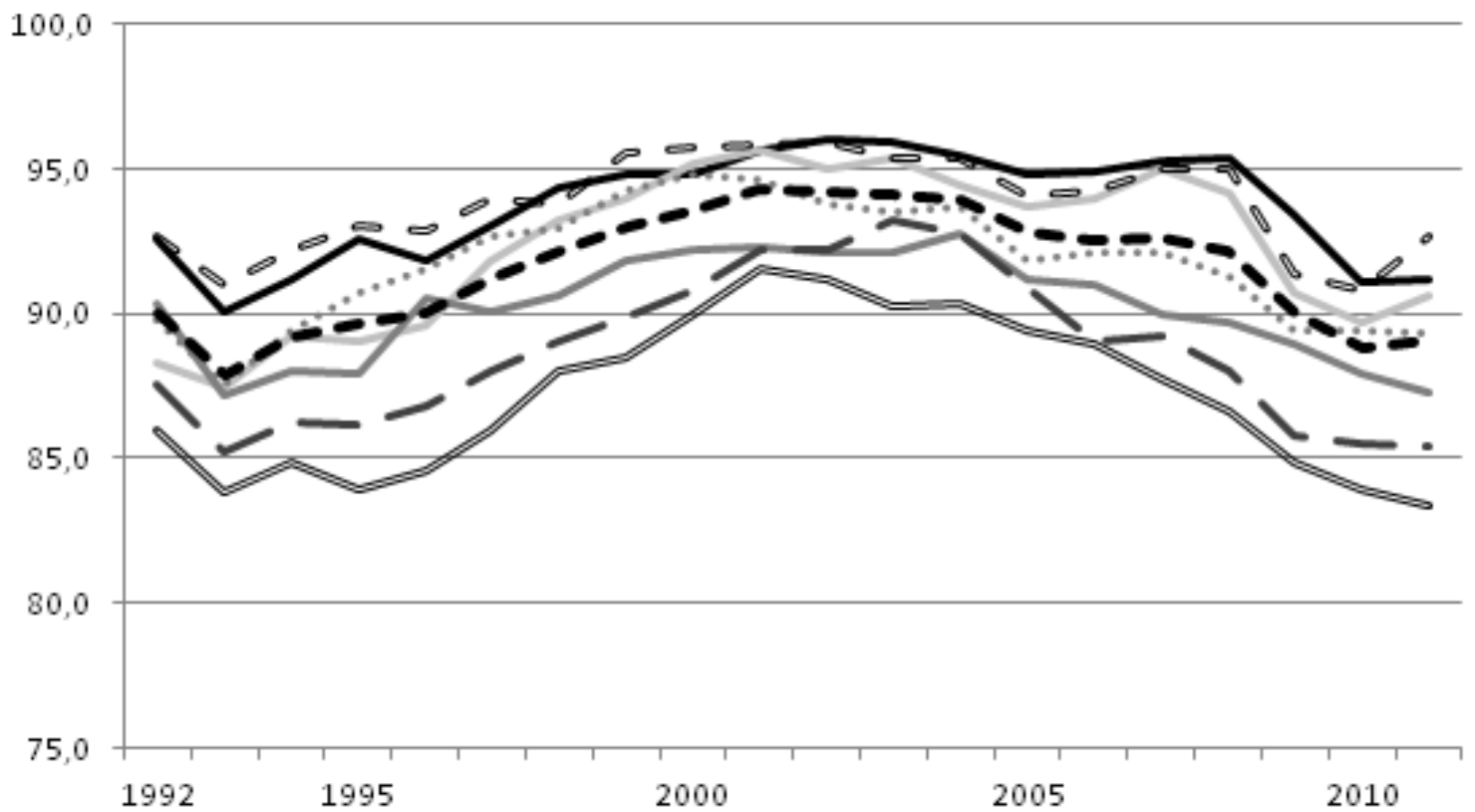


# Employment - unemployment

**Number of employed people in regions, 1992-2011 (thousand person)**



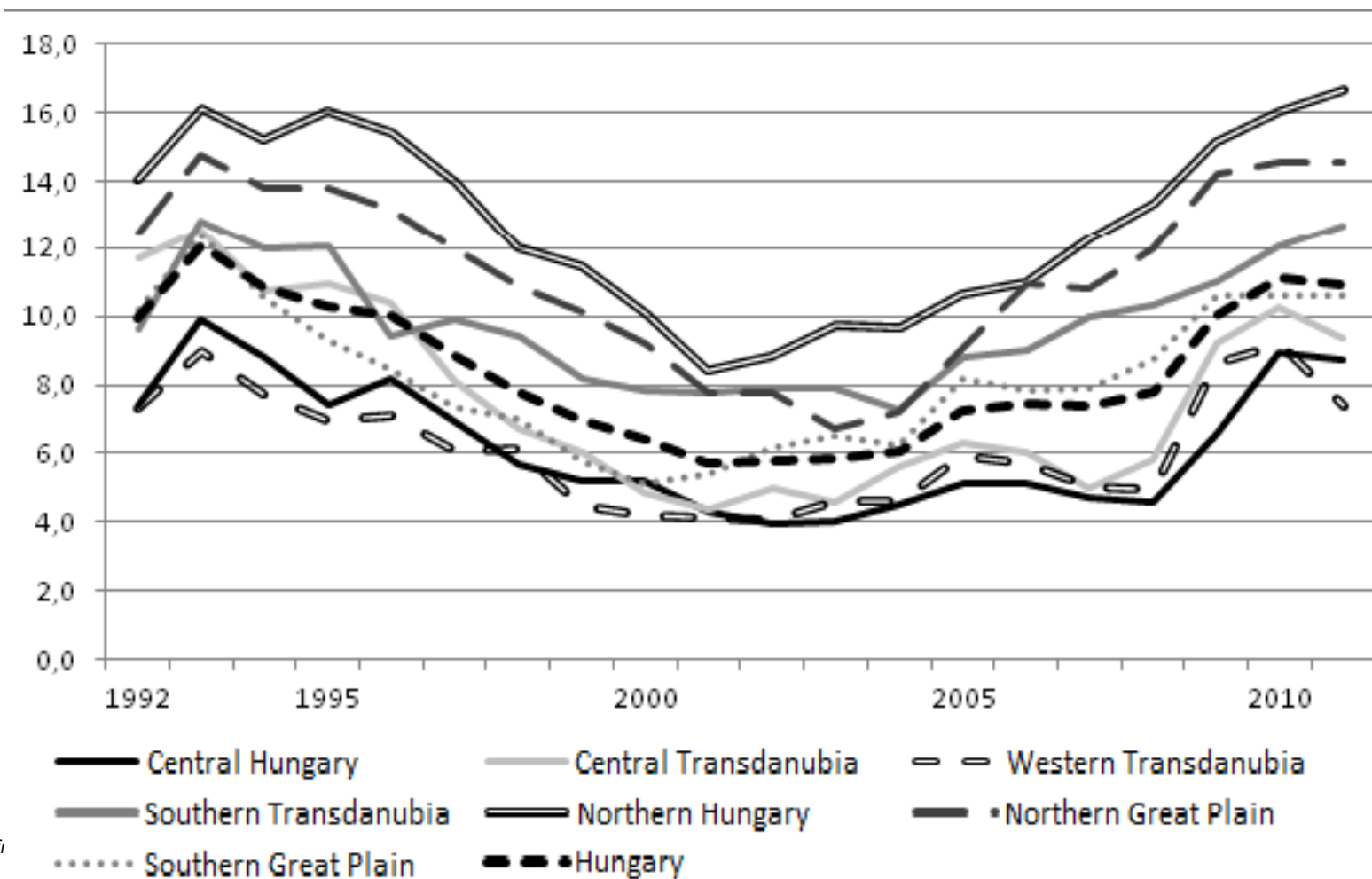
**Rate of employed people in economically active ones, in regions, 1992-2011 (%)**



- Central Hungary
- Central Transdanubia
- - -** Western Transdanubia
- Southern Transdanubia
- Northern Hungary
- - -** Northern Great Plain
- .....** Southern Great Plain
- - -** Hungary

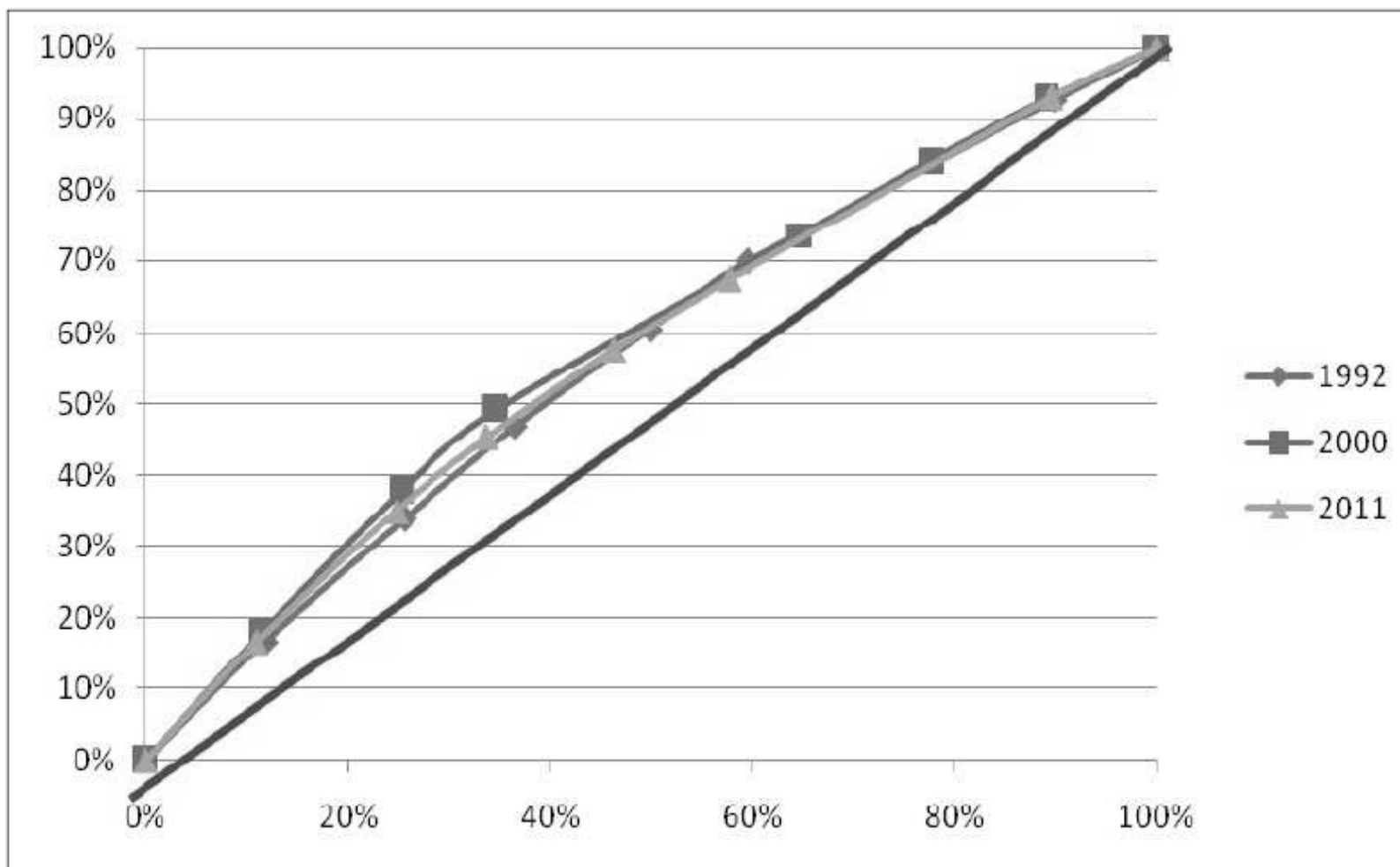
Source: Based on data from Central Statistical Office

### Unemployment rate in regions, 1992-2011 (%)



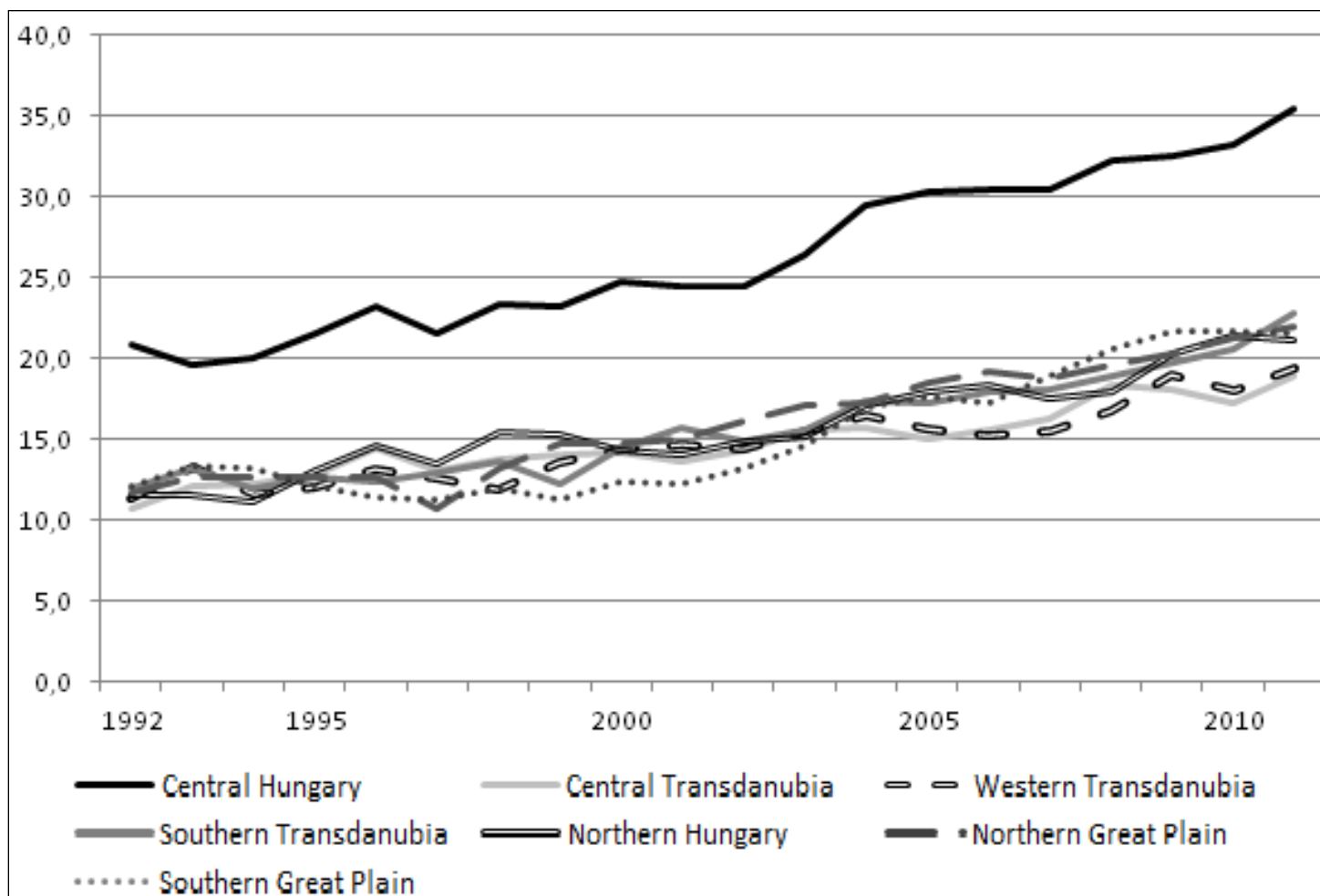
Source: Based on data from Central Statistical Office

## *Change of unemployment concentration in the regions of Hungary*



# High education

Number of graduate employed population in ratio to employed population (1992-2011) (%)



# R&D

## Number and expenses of research and development institutions (2010)

	Number of R&D institutions	Cost (million Ft)	Cost for one institution (million Ft)	Expenditures (million Ft)	Expenditures for one institution (million Ft)
Central Hungary	1 471	179 988	122,4	202 589	137,7
Central Transdanubia	203	14 814	73	16 477	81,2
Western Transdanubia	256	13 109	51,2	15 532	60,7
Southern Transdanubia	203	7 417	36,5	7 928	39,1
Northern Hungary	191	9 970	52,2	11 354	59,4
Northern Great Plain	307	22 949	74,8	27 321	89
Southern Great plain	352	21 074	59,9	23 617	67,1

Source: Based on data from Central Statistical Office



A projekt az Európai Unió támogatásával, az Európai Szociális Alap társfinanszírozásával valósul meg.

## Summary

- **Increasing trend in differences**
- **Region of capital differs a lot**
- **Nearest data to national average: Western, Central Transdanubia, Northern Hungary**
- **Backward places can be defined**
- **Basis of picking up methods to moderate economy (opposite example: NFT vs. ÚMFT)**



A projekt az Európai Unió támogatásával,  
az Európai Szociális Alap  
társfinanszírozásával valósul meg.

**Thank you for attention!**



A projekt az Európai Unió támogatásával,  
az Európai Szociális Alap  
társfinanszírozásával valósul meg.