

ECONOMICS OF EDUCATION

Sponsored by a Grant TÁMOP-4.1.2-08/2/A/KMR-2009-0041

Course Material Developed by Department of Economics,
Faculty of Social Sciences, Eötvös Loránd University Budapest (ELTE)

Department of Economics, Eötvös Loránd University Budapest

Institute of Economics, Hungarian Academy of Sciences

Balassi Kiadó, Budapest



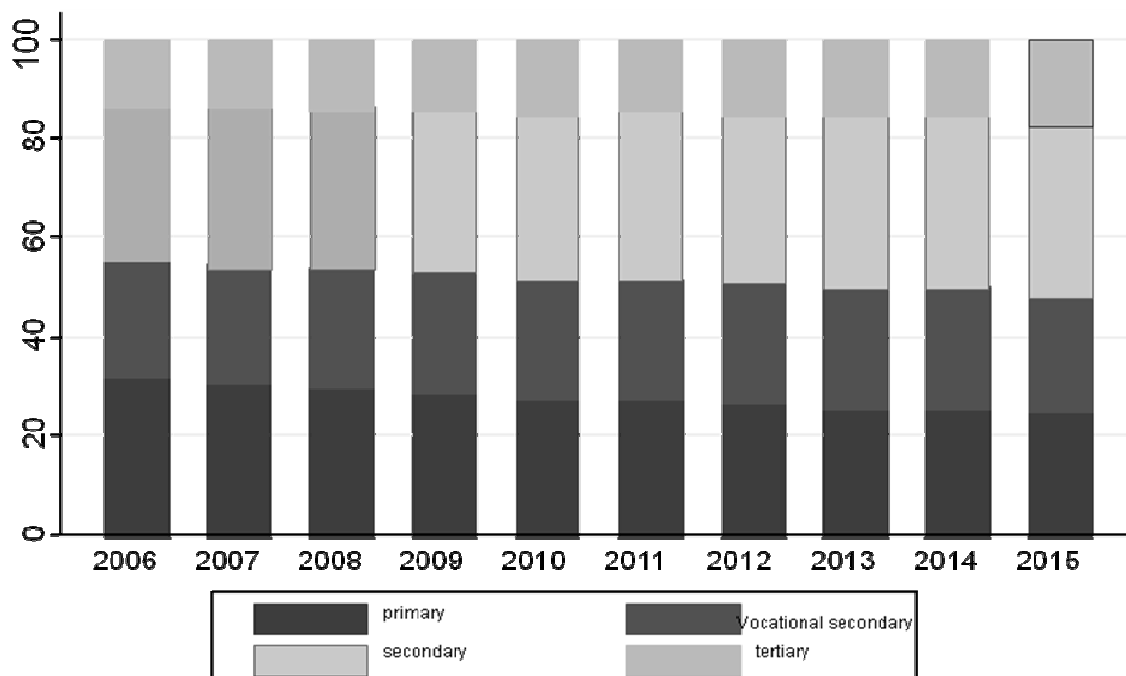
Author: Júlia Varga
 Supervised by Júlia Varga

June 2011

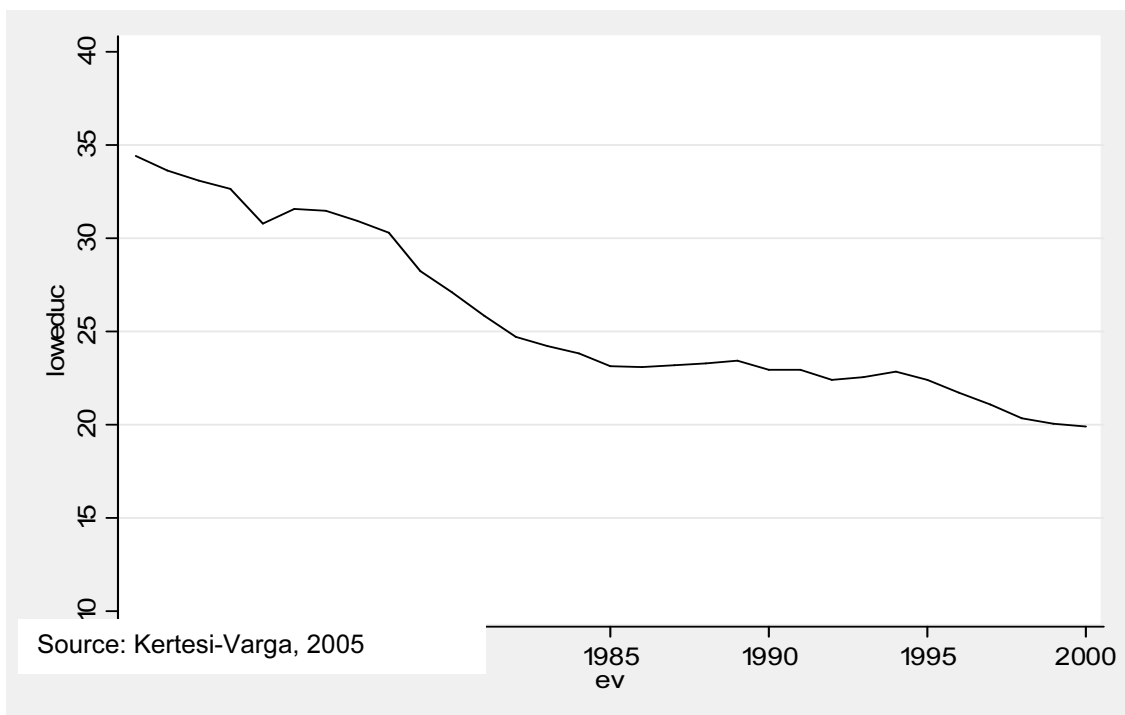
Week 13

Education in Hungary

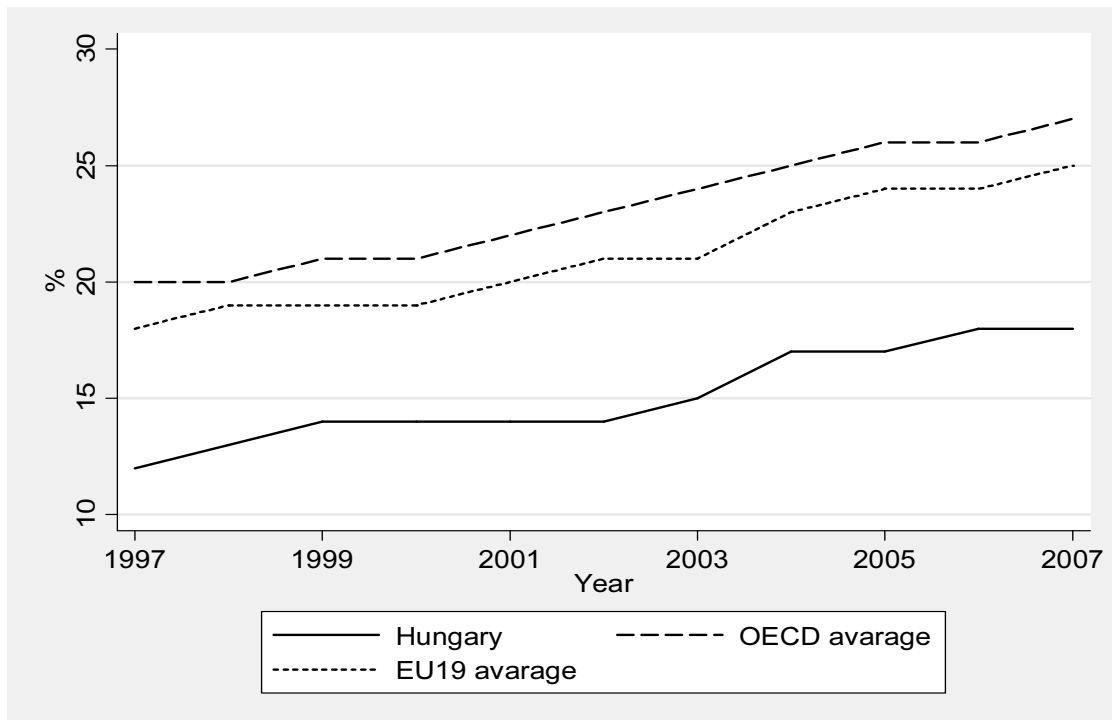
Educational attainment of the population



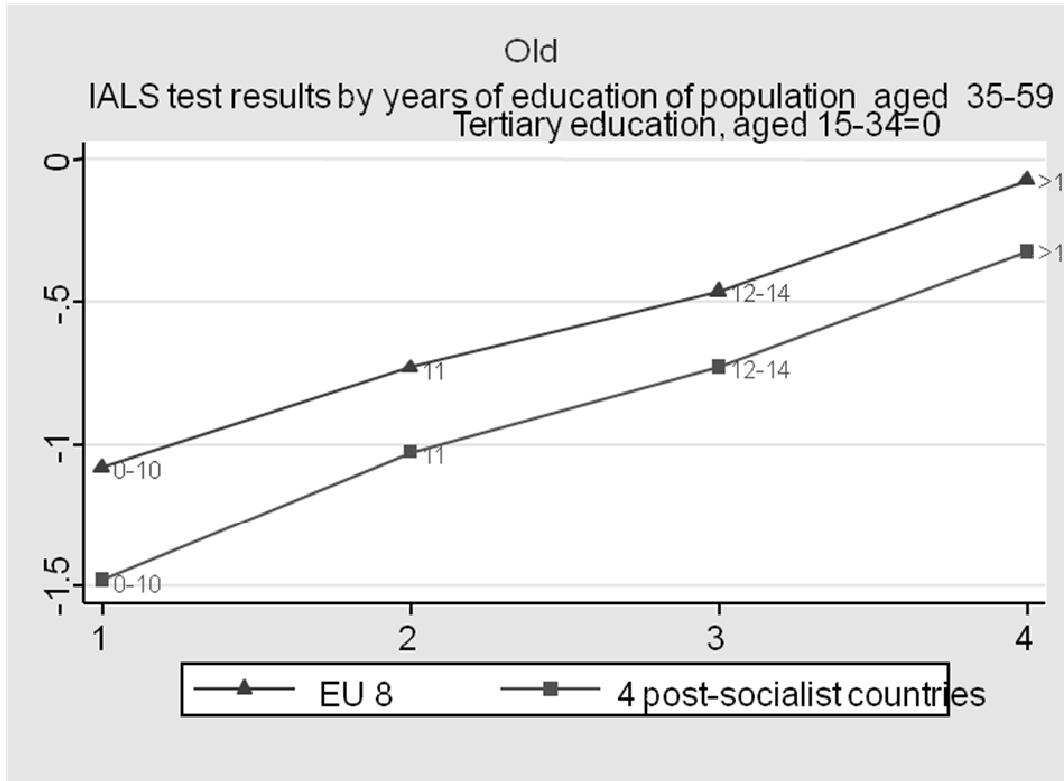
Share of aged 20 whose highest educational attainment is at most 8 grades (%)



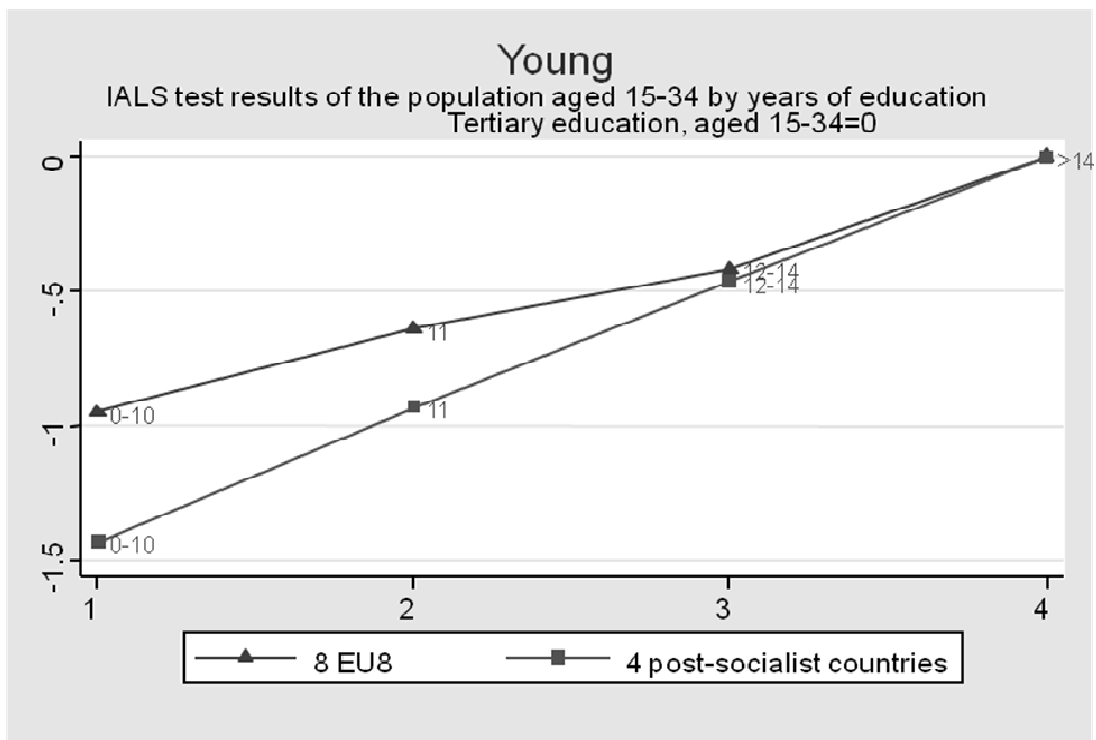
Population that has attained tertiary education %, aged 25–64



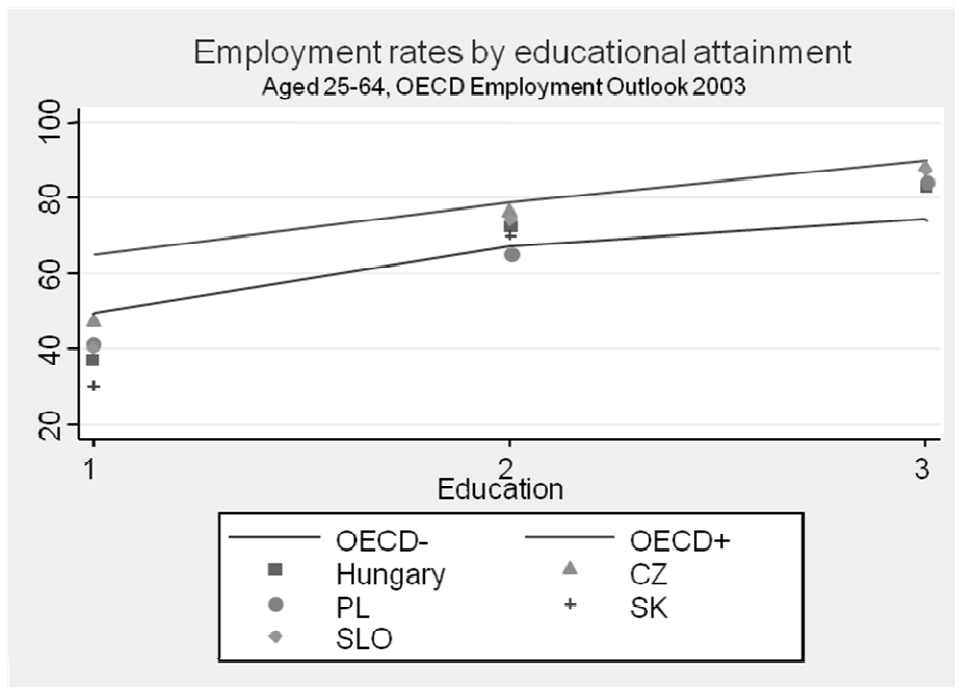
Source: OECD Education at a Glance 2009 e



Source: estimations of János Köllő

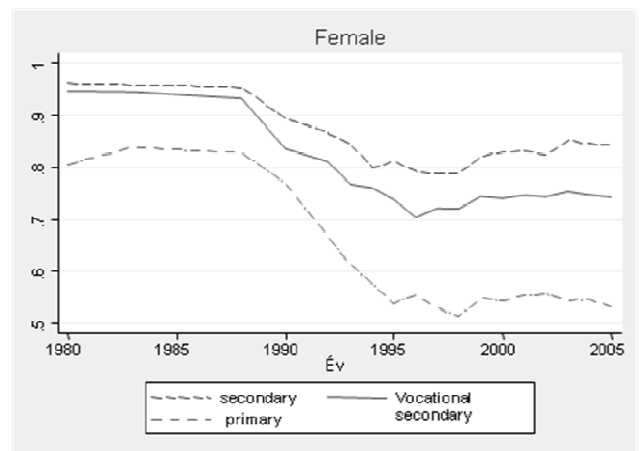
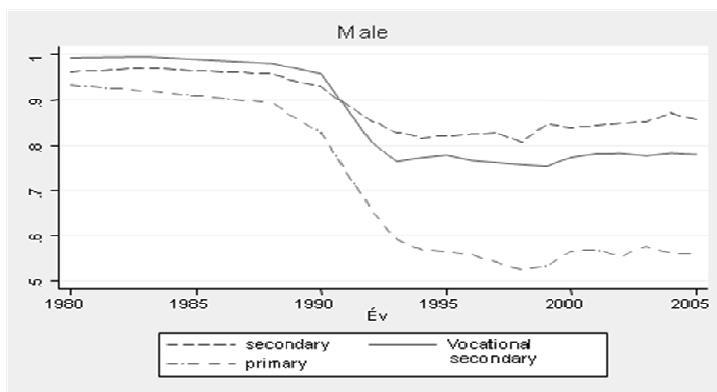


Source: estimations of János Köllő



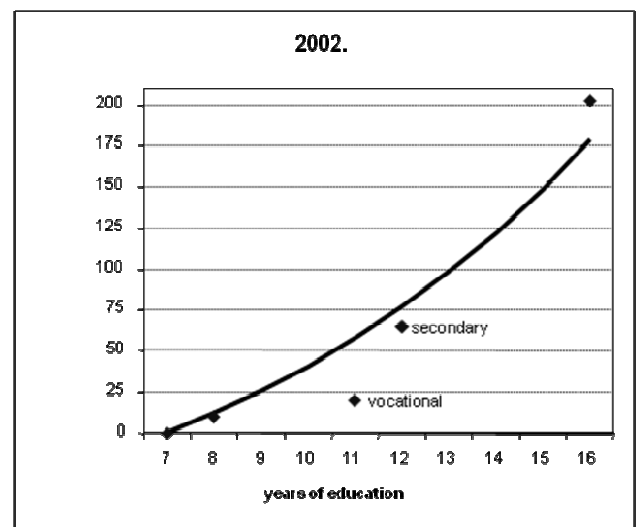
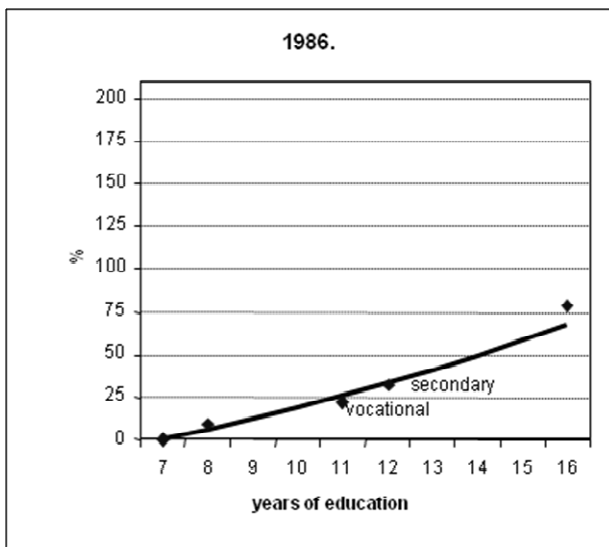
Source: estimations of János Köllő

Employment rates in Hungary by educational attainment and gender, 1980–2005



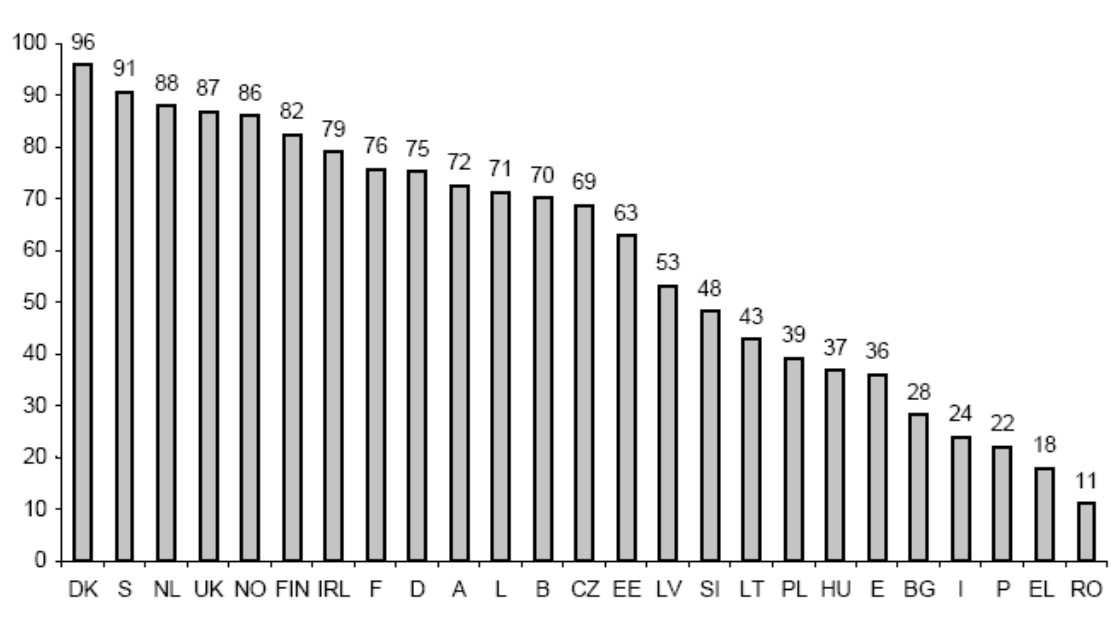
Source: Kézdi, 2007

Returns to education, different functional forms (schooling categories and linear)

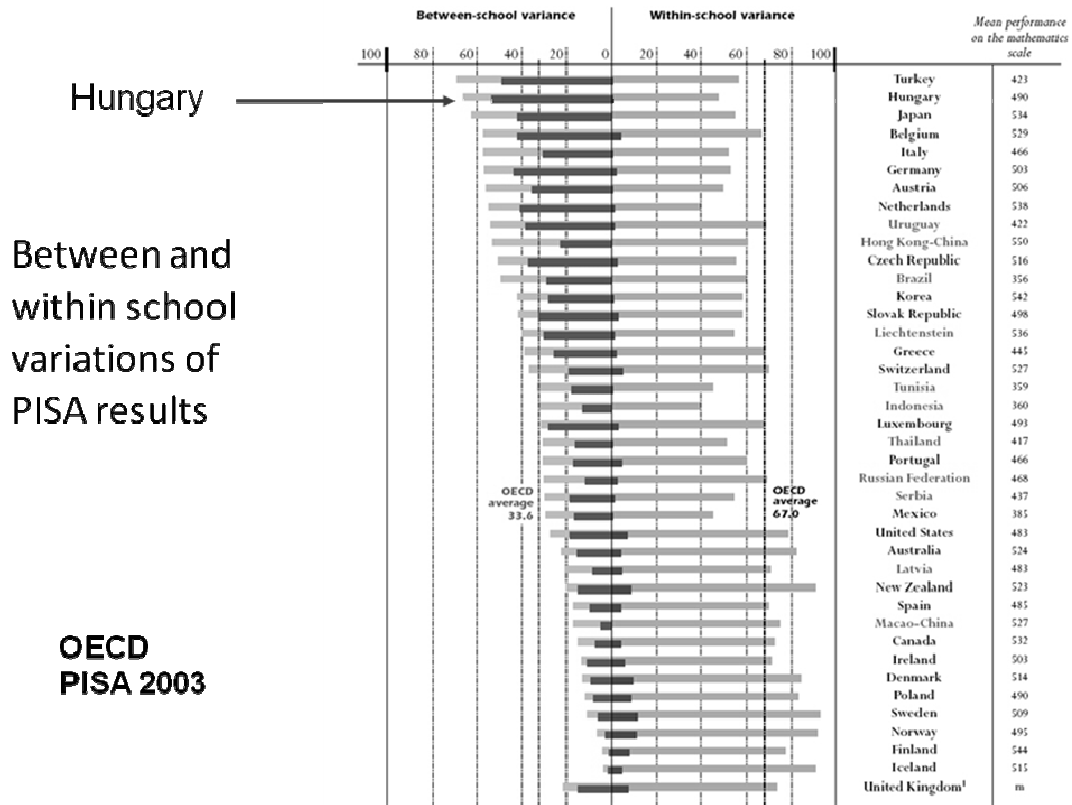


Source: Kézdi (2007)

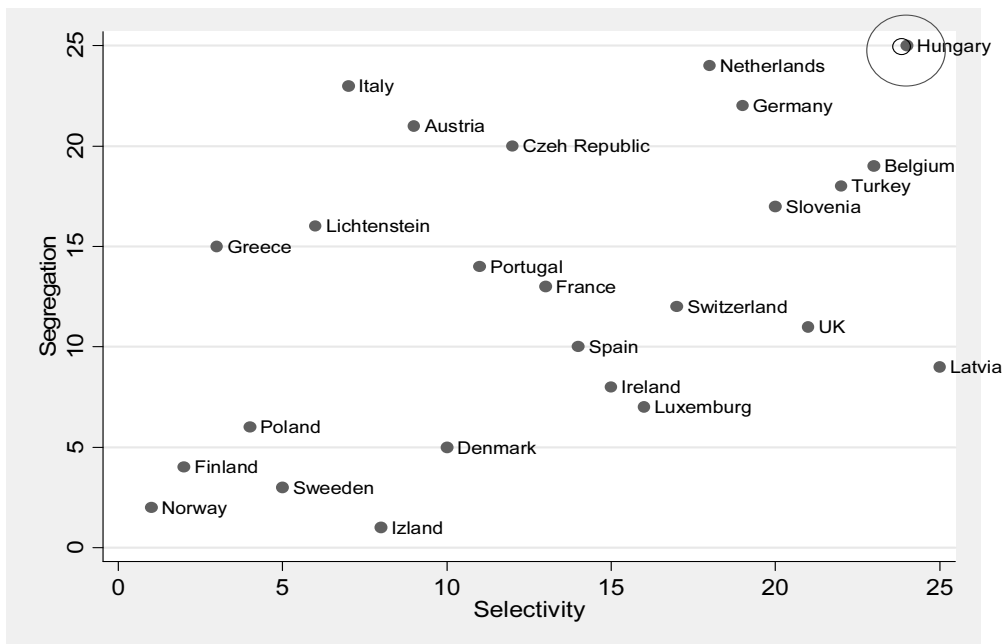
Training enterprises as a % of all enterprises



Source: Eurostat, 2002

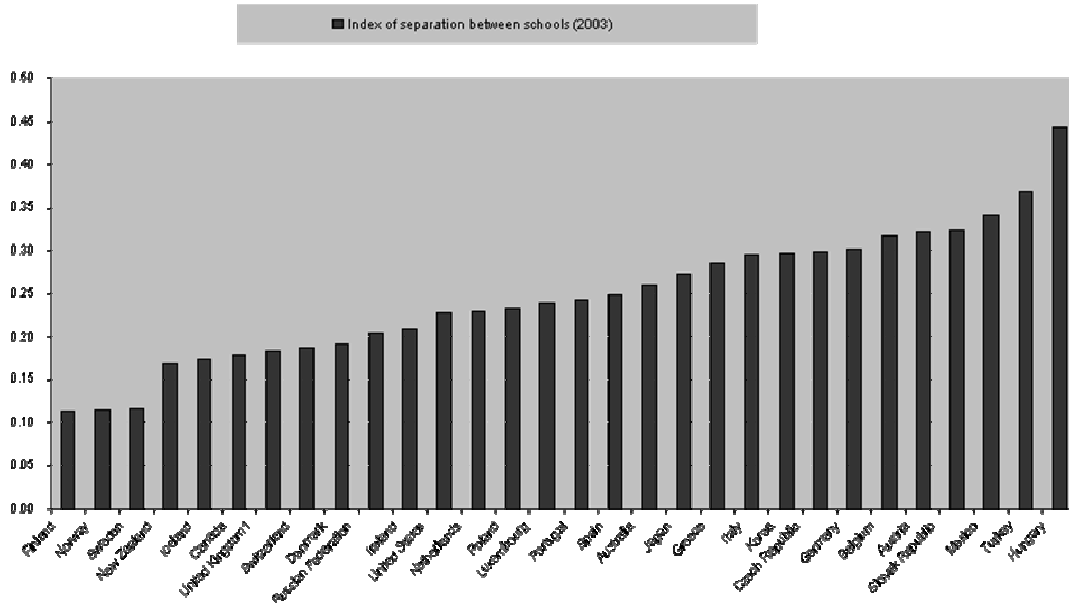


Average rankings of two dimensions selectivity of school structure and segregation



Source: Based on data of Demeuse–Baye: Measuring and Comparing the Equity of Education Systems in Europe, 2008.

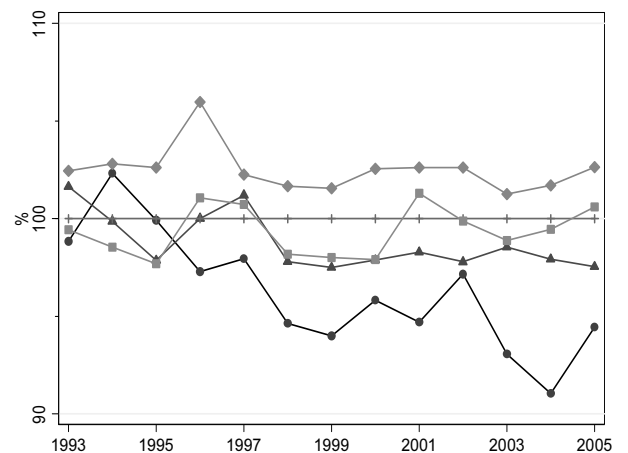
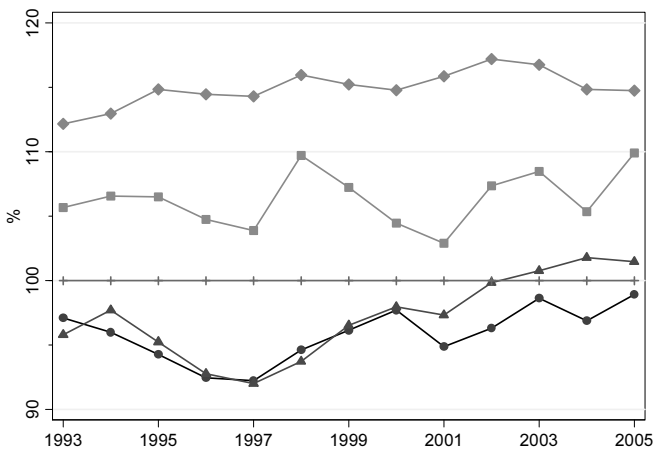
Index of separation between schools, 2003



Source: Based on data of Demeuse–Baye: Measuring and Comparing the Equity of Education Systems in Europe, 2008.



Primary school expenditure per pupil and average income per inhabitant for quintiles by average income of villages and towns, as a proportion of the middle quintile



Source: Hermann, 2007

ELTE Faculty of Social Sciences, Department of Economics

Thank You for using this teaching material.

We welcome any questions, critical notes or comments we can use to improve it.

Comments are to be sent to our email address listed at our homepage,

eltecon.hu