

ECONOMICS OF EDUCATION





NEW

SZÉCHENYI PLAN

ECONOMICS OF EDUCATION

Sponsored by a Grant TÁMOP-4.1.2-08/2/A/KMR-2009-0041

Course Material Developed by Department of Economics,

Faculty of Social Sciences, Eötvös Loránd University Budapest (ELTE)

Department of Economics, Eötvös Loránd University Budapest

Institute of Economics, Hungarian Academy of Sciences

Balassi Kiadó, Budapest



The project is supported
by the European Union.

National Development Agency
www.ujszechenyiterv.gov.hu
06 40 638 638



HUNGARY'S RENEWAL



The projects have been supported
by the European Union.

ELTE Faculty of Social Sciences, Department of Economics

ECONOMICS OF EDUCATION

Author: Júlia Varga

Supervised by Júlia Varga

June 2011

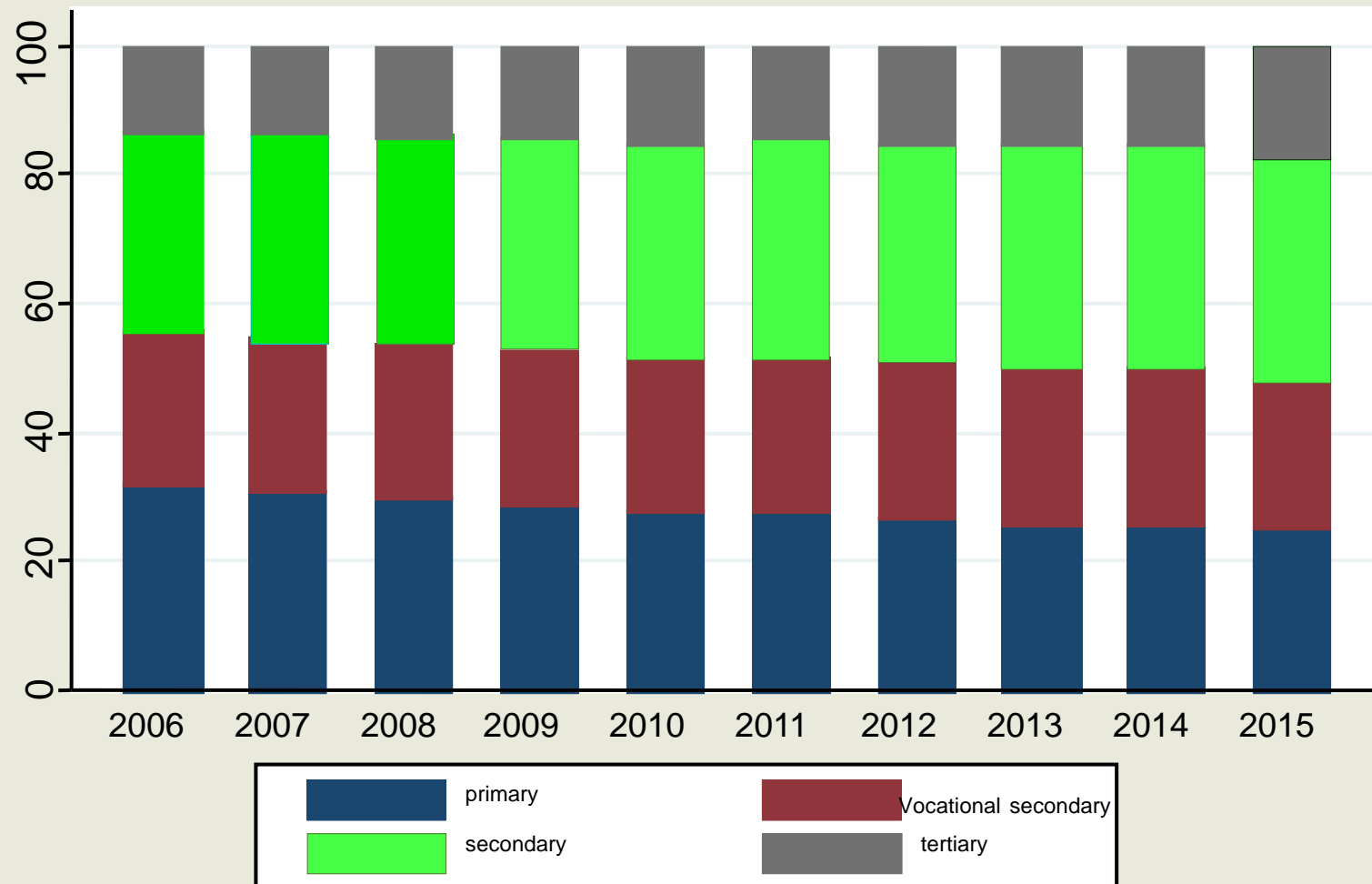
ECONOMICS OF EDUCATION

Week 13

Education in Hungary

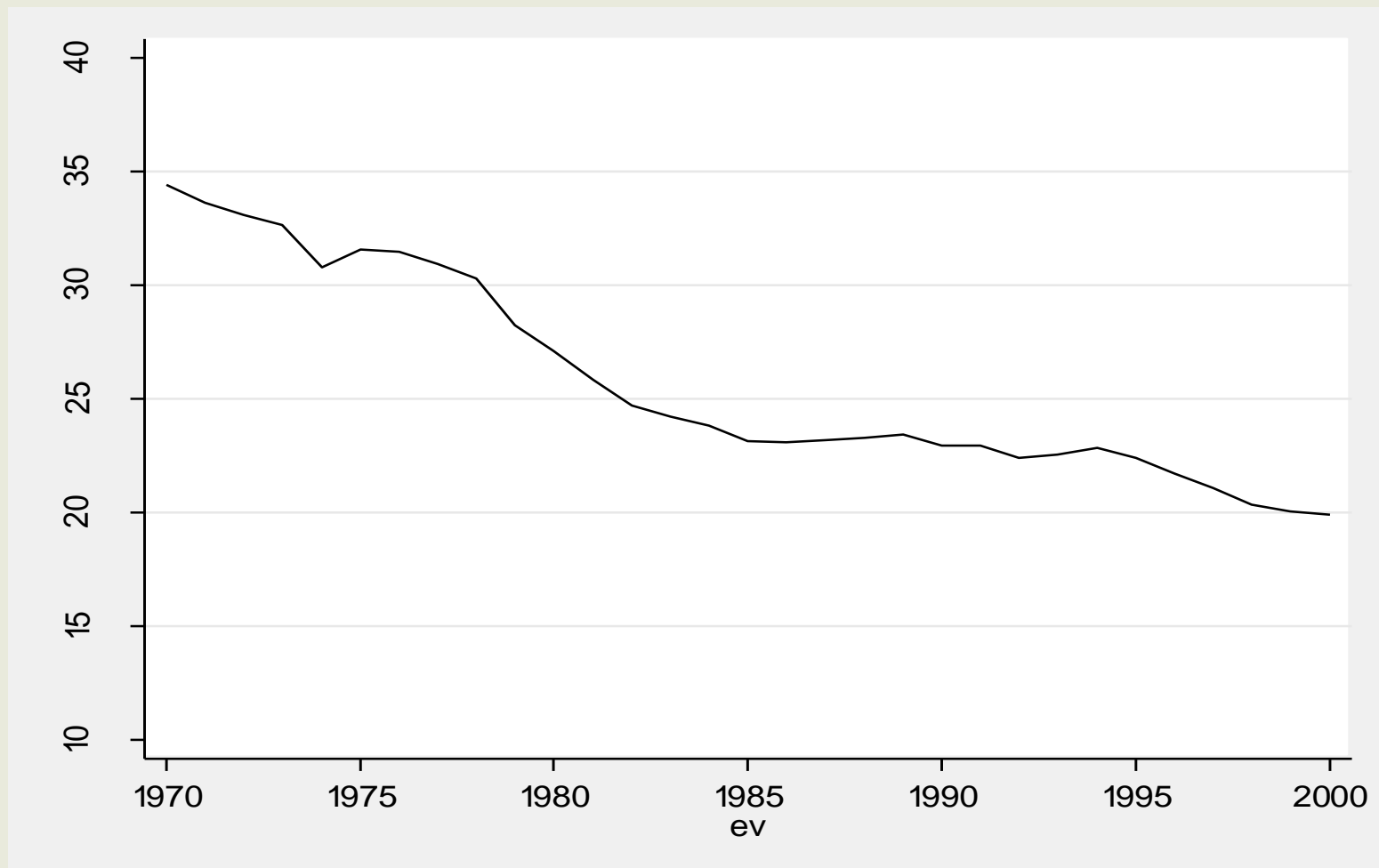
Júlia Varga

Educational attainment of the population



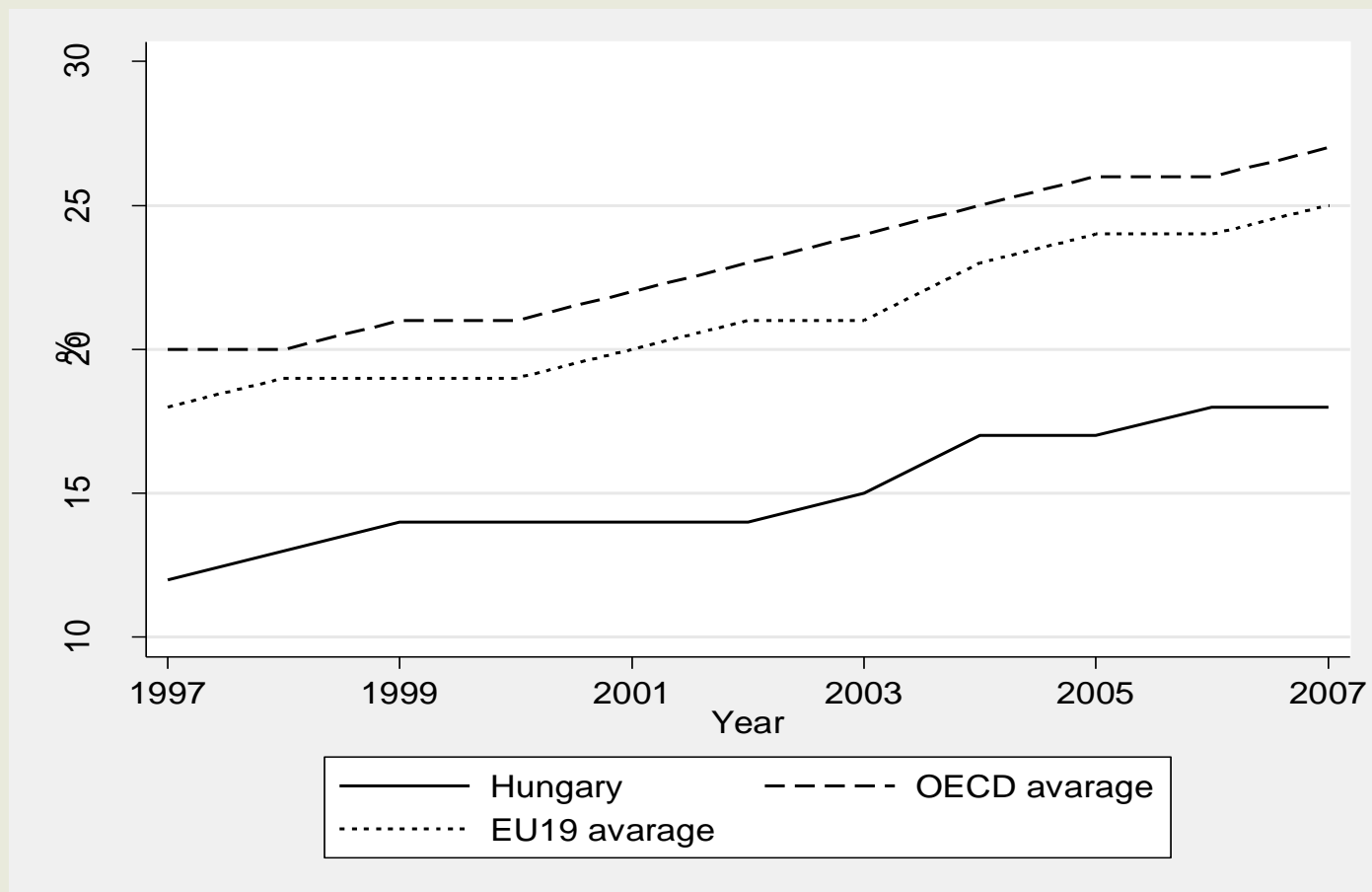
Data: Based on projection of László Hablicsek László

Share of aged 20 whose highest educational attainment is at most 8 grades (%)

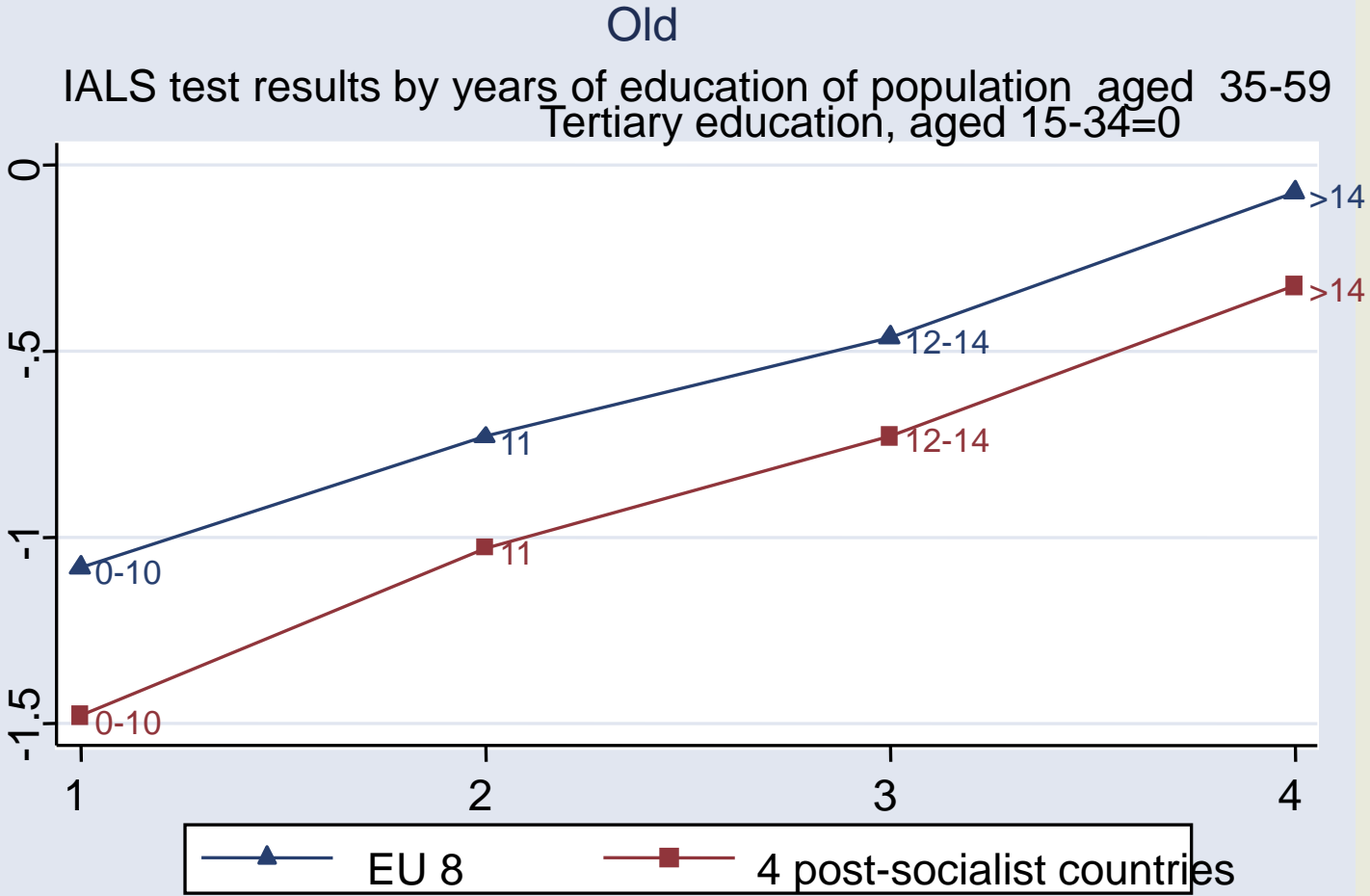


Source: Kertesi-Varga, 2005

Population that has attained tertiary education %, aged 25–64



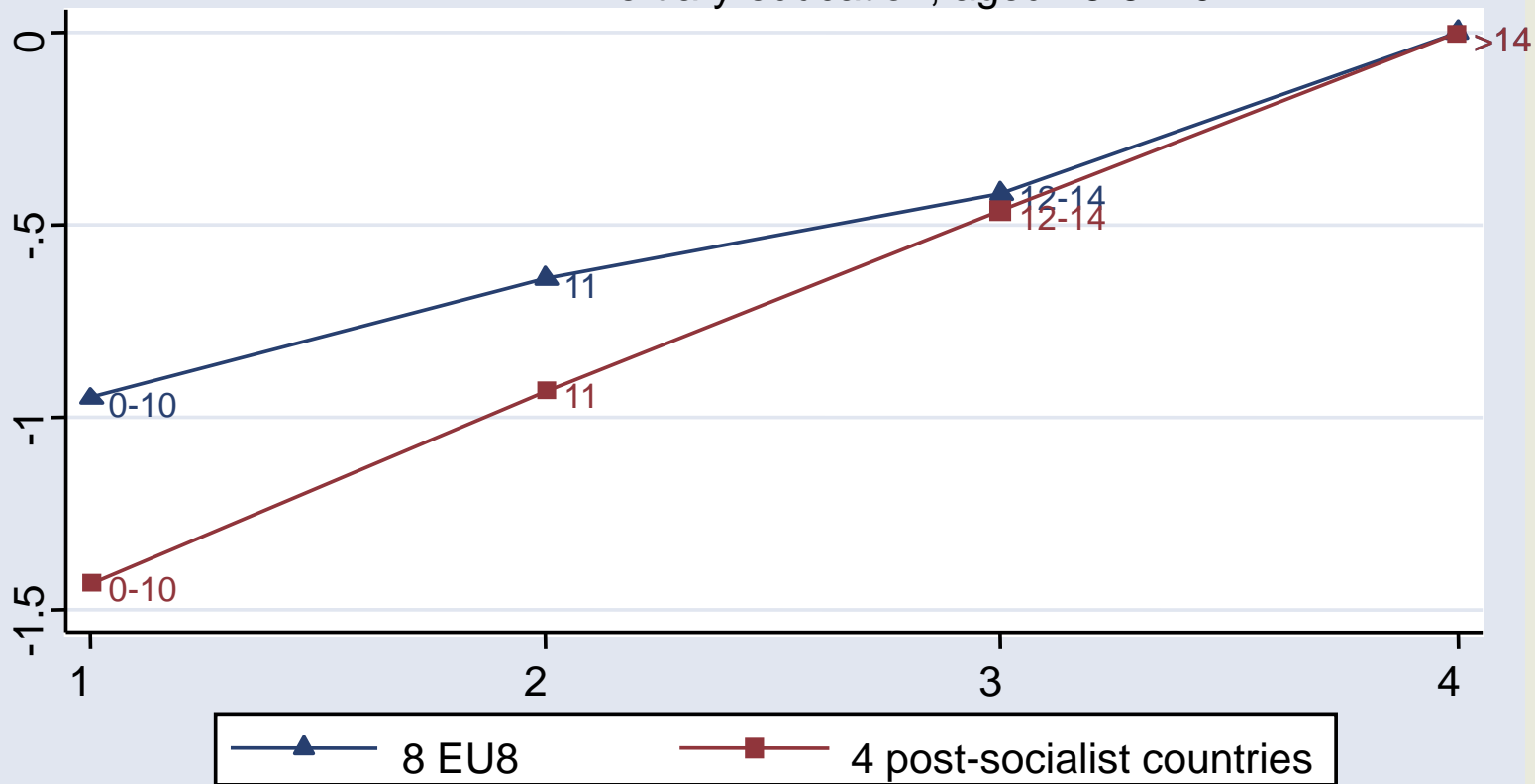
Source: OECD Education at a Glance 2009 e



Source: estimations of János Köllő

Young

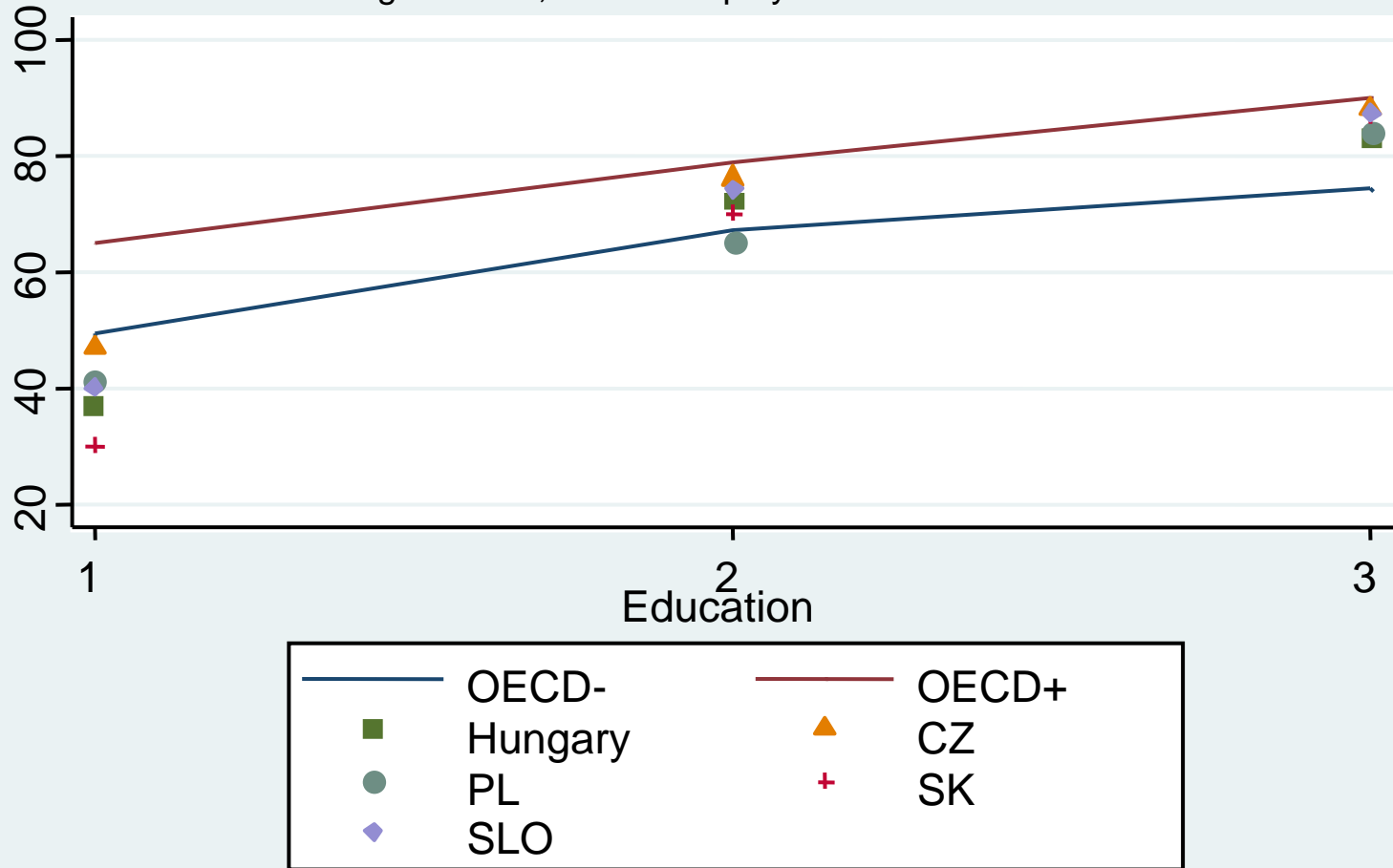
IALS test results of the population aged 15-34 by years of education
Tertiary education, aged 15-34=0



Source: estimations of János Köllő

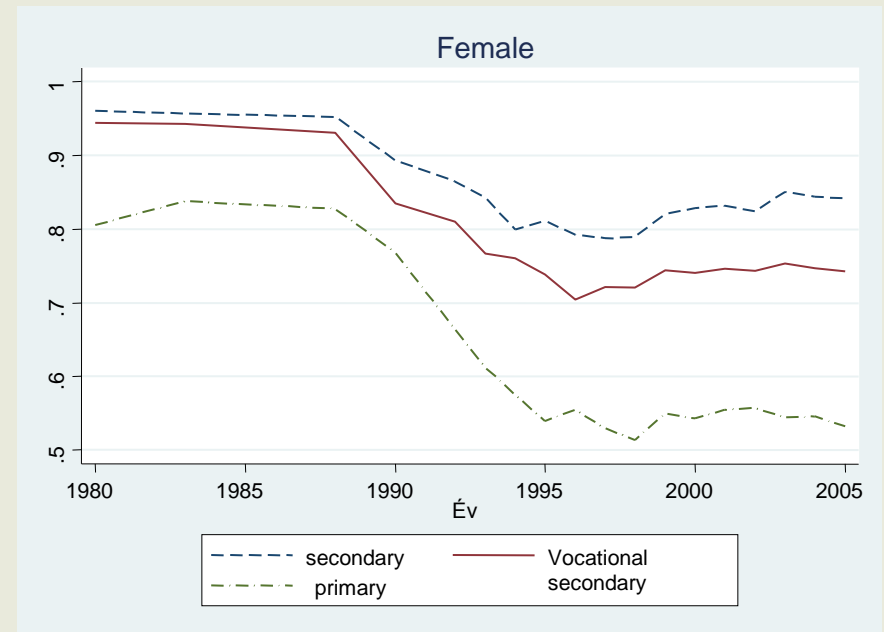
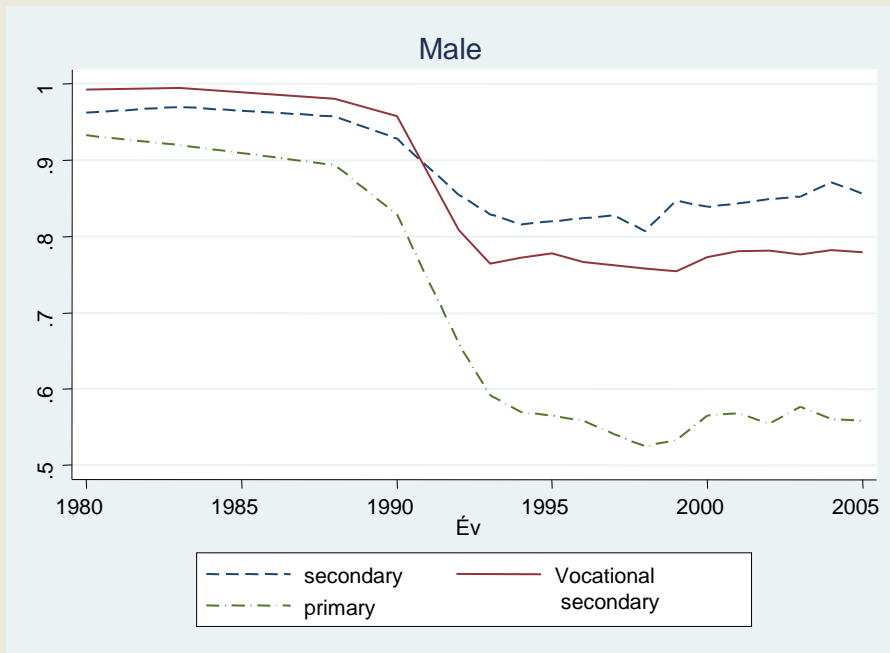
Employment rates by educational attainment

Aged 25-64, OECD Employment Outlook 2003



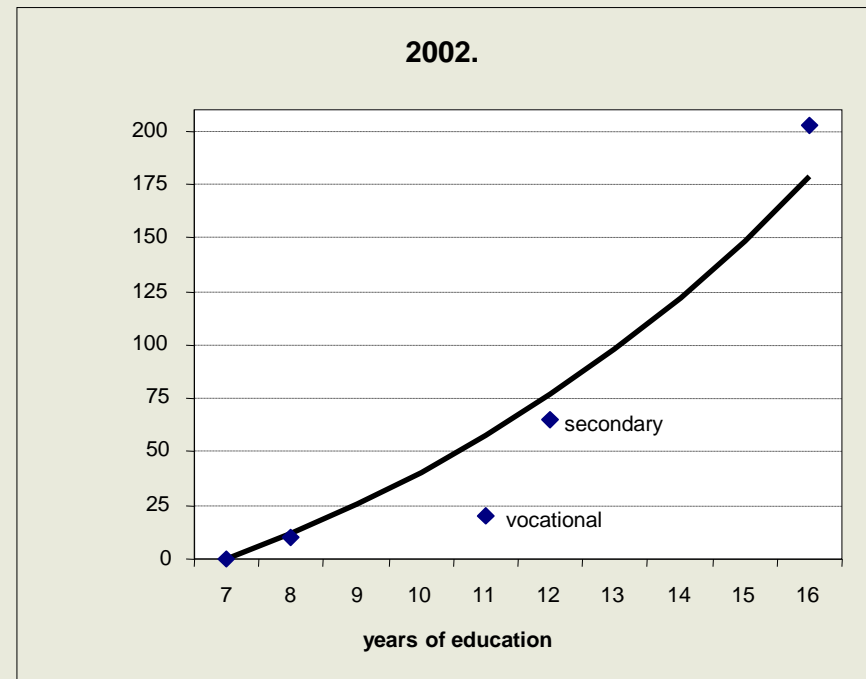
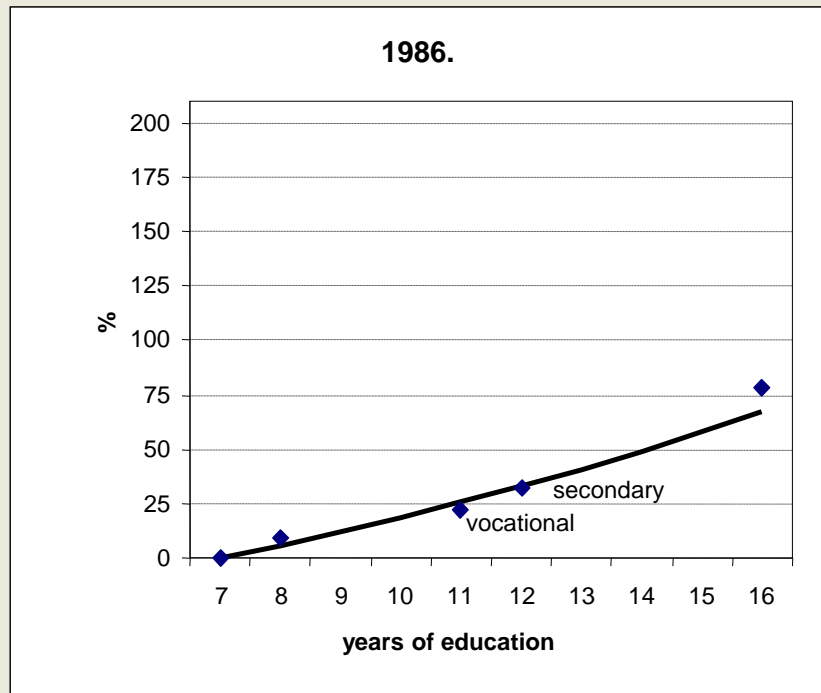
Source: estimations of János Köllő

Employment rates in Hungary by educational attainment and gender, 1980–2005



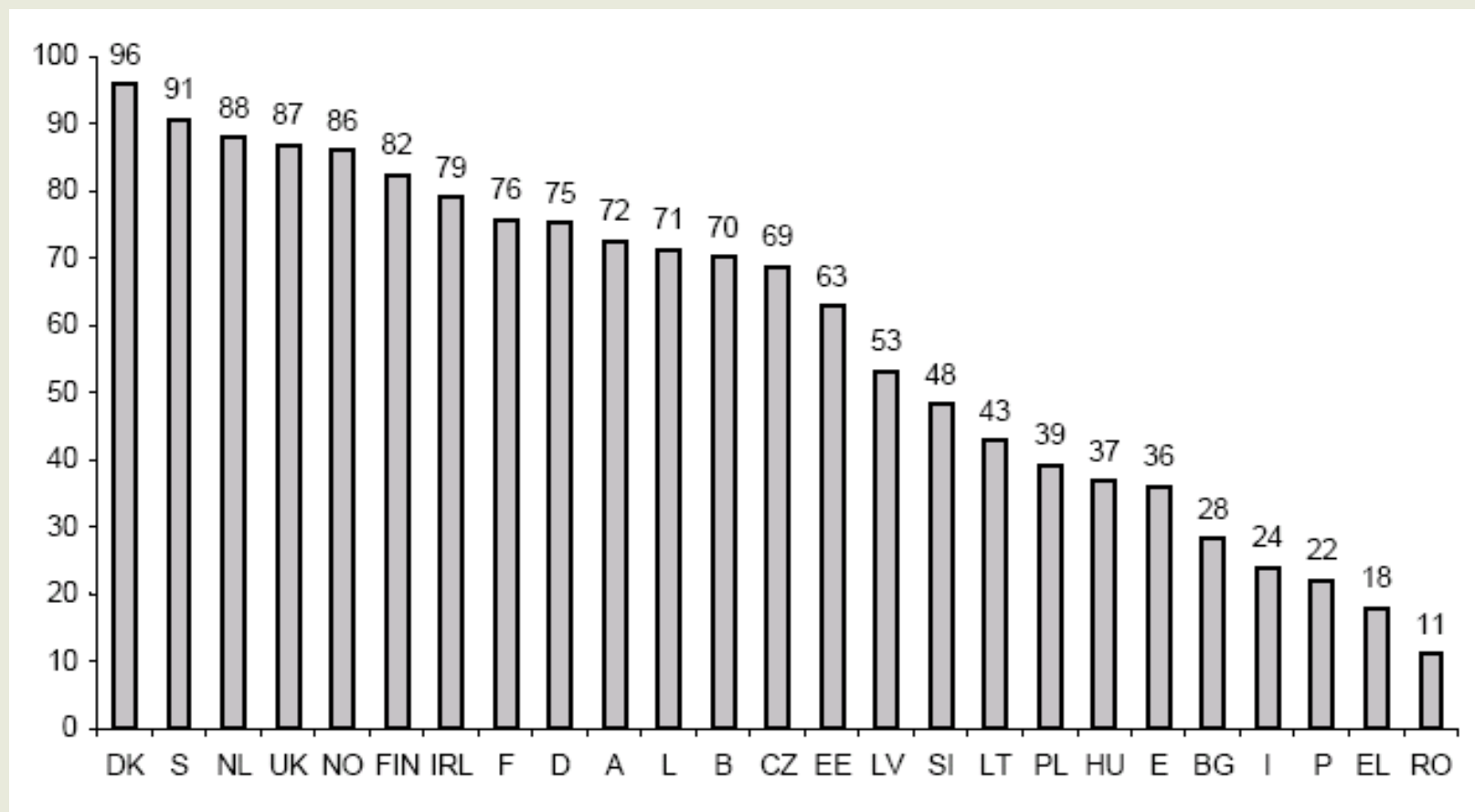
Source: Kézdi, 2007

Returns to education, different functional forms (schooling categories and linear)



Source: Kézdi (2007)

Training enterprises as a % of all enterprises

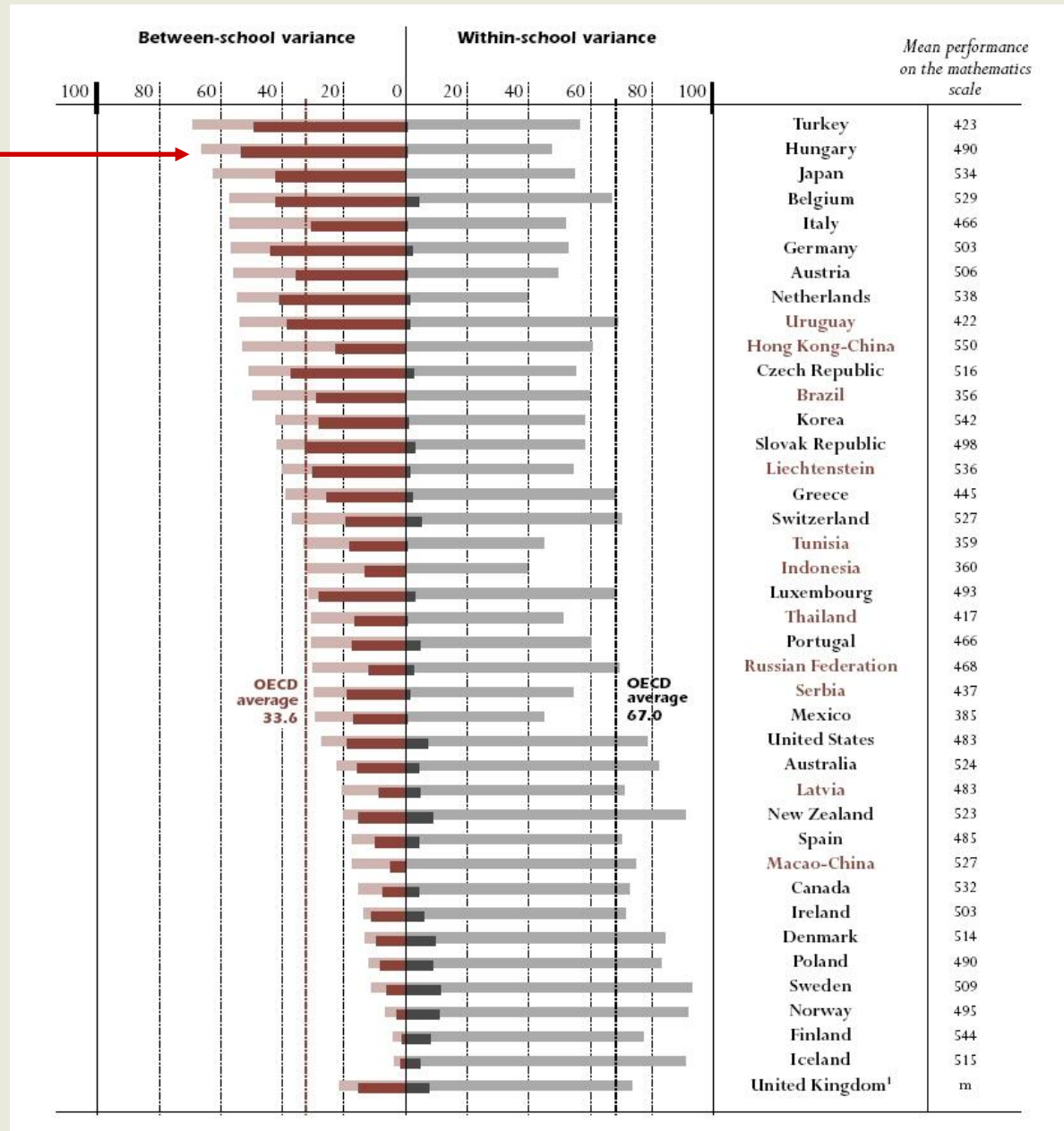


Source: Eurostat, 2002

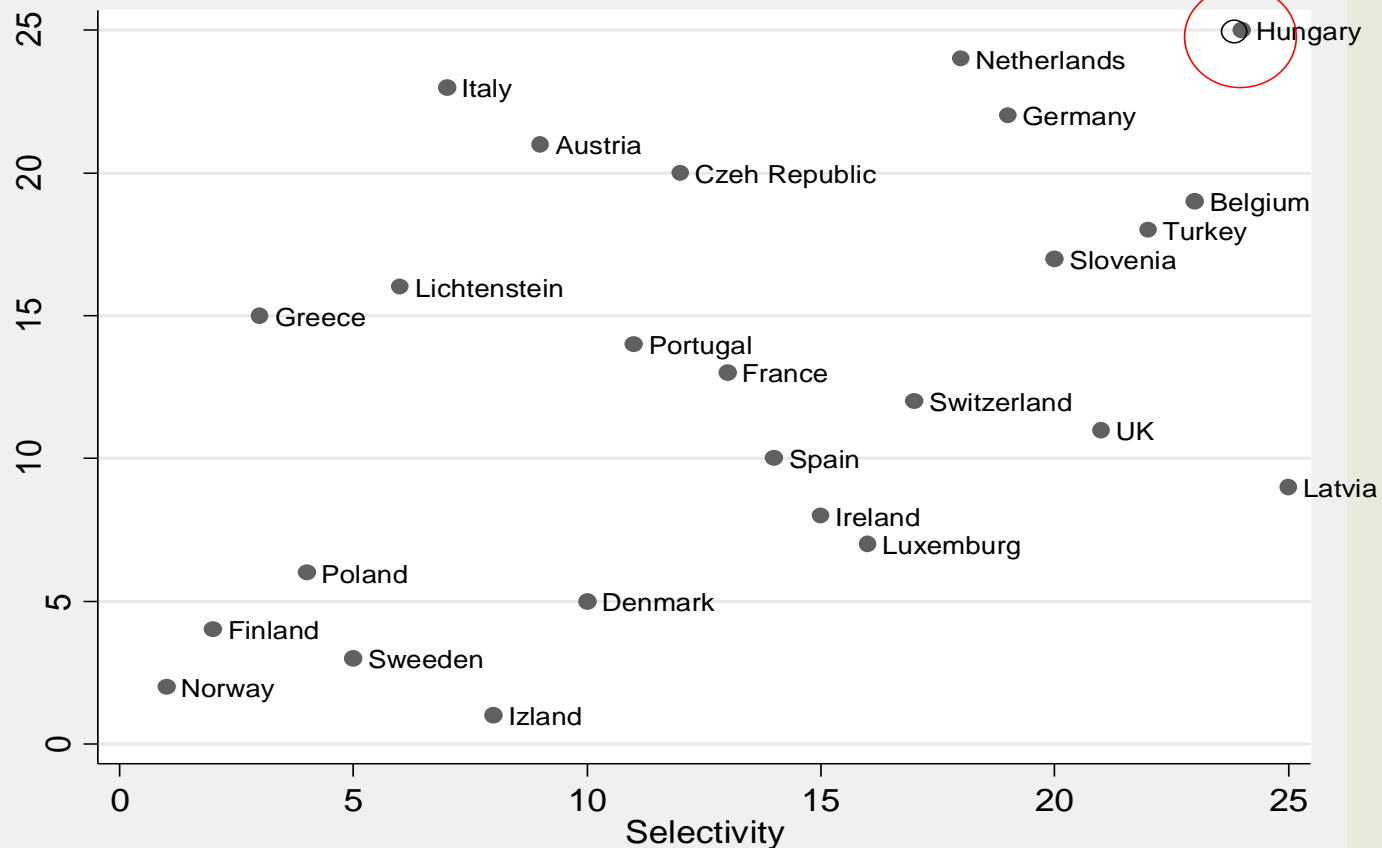
Between and within school variations of PISA results

OECD
PISA 2003

Hungary

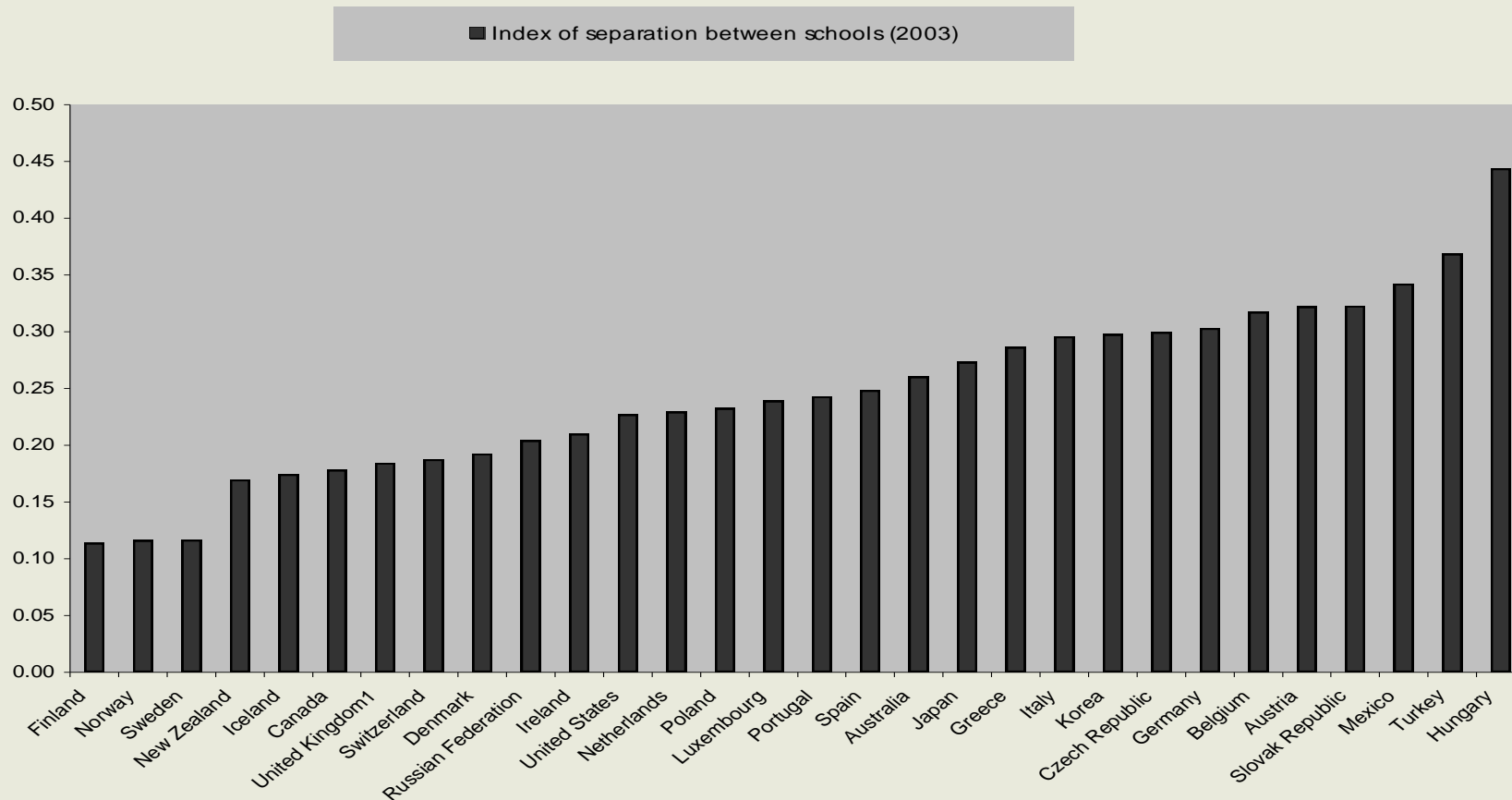


Average rankings of two dimensions selectivity of school structure and segregation



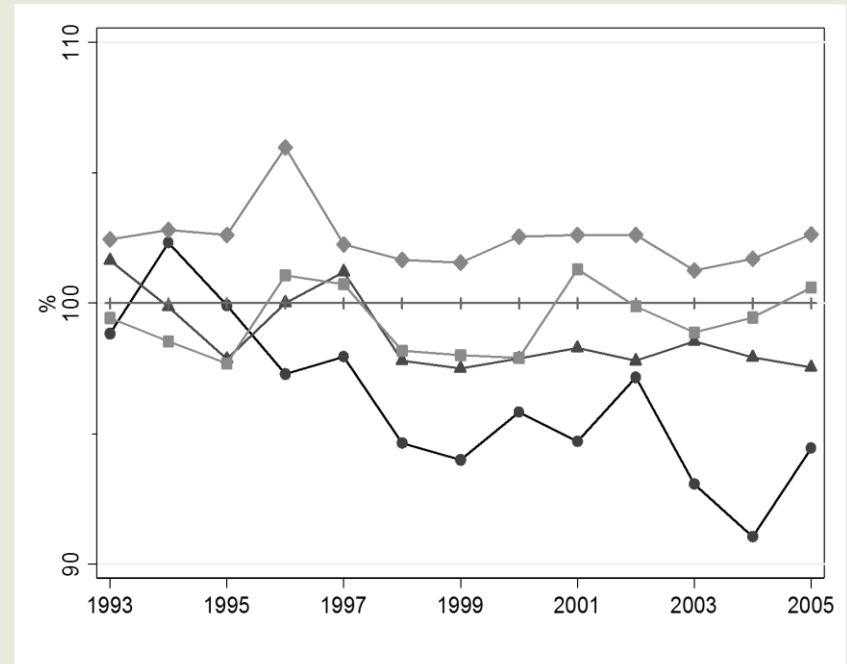
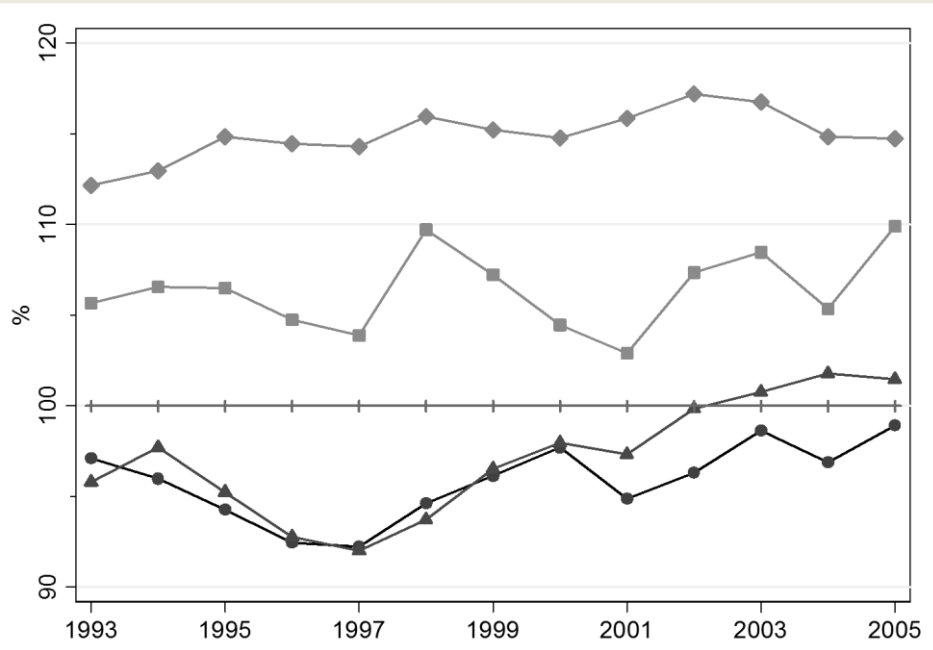
Source: Based on data of Demeuse–Baye: Measuring and Comparing the Equity of Education Systems in Europe, 2008.

Index of separation between schools, 2003



Source: Based on data of Demeuse–Baye: Measuring and Comparing the Equity of Education Systems in Europe, 2008.

Primary school expenditure per pupil and average income per inhabitant for quintiles by average income of villages and towns, as a proportion of the middle quintile



Source: Hermann, 2007

ELTE Faculty of Social Sciences, Department of Economics

Thank You for using this teaching material.

We welcome any questions, critical notes or comments we can use to improve it.

Comments are to be sent to our email address listed at our homepage,

eltecon.hu